

POWER TOOLS

Overview	248
Cordless	250
Air	260
Power Tool Accessories	283



POWER TOOLS

DELIVERING POWERFUL INNOVATION.

From lithium cordless impact wrenches, to powerful air tools, to ergonomic sanders—Snap-on delivers control, comfort and, of course, power.

Power.

Power means a lot of things, but the bottom line is it's about getting the job done. Snap-on gives you more ways to do it.

- Powerful torque—It all starts here. Snap-on uses heavy duty components combined with strong, lightweight bodies to give you more power per pound.
- Cordless tools—Snap-on's new lithium series offers long-lasting power for the tools you use most.
- Accessibility—Snap-on brings power to places where only hand tools used to go.



Comfort And Control.

All the power in the world means nothing if you are fighting excess weight, vibration and noise. Snap-on® power tools are built with the comfort and control you need to use them all day, every day.

- **Balanced weight**—Glass-filled nylon housings balance the weight of cordless tools for better control.
- **Ergonomic grips**—It's not rocket science, if the tool feels good in your hand, it's easier to use.
- **Compact nose design**—Removing unnecessary bulk allows better access to restricted areas.



CORDLESS

Progress Is Measured In The Power To Move On To Your Next Job.

Each Snap-on® cordless tool combines surprising power with maximum mobility.

- Lightweight and comfortable—Snap-on cordless tools are designed to feel balanced and natural in your hand.
- Power—Pull the trigger and feel the power. That's when you realize why Snap-on has become a leader in the cordless category.

Durability.

If you are going to use tools that go anywhere, they'd better work when you get there.

- Snap-on builds tools with the best components and engineers them to exact standards.
- Higher grade metals—Internal components combined with glass-filled nylon housings give you a tool that will stand up in the toughest shop environment.

More Ways To Give You Power.

Snap-on recently added more battery options to the power tool collection.

Lithium Batteries

Our new lithium batteries are made for the long work day. They weigh less and last longer than Ni-Cad batteries, making them ideal for the tools you use most.



Ni-Cad Batteries

When it comes to keeping costs down, Ni-Cad is still the first choice. For techs who need to watch their budget, but still want to go cordless, Ni-Cad has the advantage.



Green Terminal

For ultimate versatility, the Green Terminal Block tools give you the option of using lithium or Ni-Cad batteries as a power source.



Impacts

Specifications	CT6855	CT6850	CT4450A	CT4410A	CT561
Battery Type	Lithium 3.0Ahr	Ni-Cad 2.5Ahr	Ni-Cad 2.5Ahr	Ni-Cad 2.5Ahr	Ni-Cad 700 mAmp
Battery Voltage	18V	18V	14.4V	14.4V	7.2V
Square Drive, inches	1/2	1/2	1/2	3/8	3/8
Torque Output, ft. lbs. (N•m)	400 (475)	400 (475)	150 (203)	150 (203)	50 (68)
Blows Per Minute, bpm	2,100	2,100	2,900	2,900	3,000
Free Speed, rpm	2,200	2,200	2,280	2,280	2,500
Charge Time (minutes)	30	40	35	35	55
Length, in. (mm)	9.95 (252)	9.95 (252)	6.4 (163)	6.4 (163)	6.2 (157)
Weight w/Battery, lbs. (kg)	6.8 (3.1)	7.6 (3.4)	4.6 (2.1)	4.6 (2.1)	1.7 (.77)
Warranty (battery)	2 Years/1,000 Cycles	1 Year	1 Year	1 Year	1 Year
Warranty (tool, charger)	1 Year	1 Year	1 Year	1 Year	1 Year
Pinned Anvil Version	CT6855P	CT6850P	CT4450AP	CT4410AP	
Quick Change Anvil Version	CT6855QC (7/16")	CT6850QC (7/16")		CT4410AQC (1/4")	
Tool Body Only	CT6850DB	CT6850DB	CT4450ADB	CT4410ADB	CT561DB

Drills/Drivers

Specifications	CDR6855	CDR6850	CDR4450	CTS561CL	CTS561
Battery Type	Lithium 3.0Ahr	Ni-Cad 2.5Ahr	Ni-Cad 2.5Ahr	Ni-Cad 700 mAmp	Ni-Cad 700 mAmp
Battery Voltage	18V	18V	14.4 V	7.2V	7.2V
Chuck Capacity, inches	1/2	1/2	1/2	1/4 Hex	1/4 Hex
Torque Output, inches lbs. (N•m)	450 (50.8)	450 (50.8)	400 (45.2)	60 (6.78)	60 (6.78)
Clutch Settings	22	22	22	6	
Gear Box Type	2 speed	2 speed	2 speed	1 speed	1 speed
RPM (Low)	0-500	0-500	0-350		
RPM (High)	0-1800	0-1800	0-1,500	375	375
Charge Time (minutes)	30	40	35	55	55
Length, inches (mm)	10.25 (260)	10.25 (260)	7.85 (199)	5.2 (132)	4.6 (117)
Weight w/Battery, lbs. (kg)	5.5 (2.5)	6.3 (2.8)	4.9 (2.2)	1.5 (.68)	1.2 (.55)
Warranty (battery)	2 Years/1,000 Cycles	1 Year	1 Year	1 Year	1 Year
Warranty (tool)	1 Year	1 Year	1 Year	1 Year	1 Year
Tool Body Only	CDR6850DB	CDR6850DB	CDR4450DB	CTS561CLDB	CTS561DB

Reciprocating Saws/Grease Guns

Specifications	CTRS6855 Recip Saw	CTRS6850 Recip Saw	C6G4850 Grease Gun
Battery Type	Lithium 3.0Ahr	Ni-Cad 2.5Ahr	Ni-Cad 2.5Ahr
Battery Voltage	18V	18V	18V
Strokes Per Minute, inches (mm)	1 (25.4)	1 (25.4)	
Strokes Per Minute	2,300	2,300	
Capacity (tubes dispensed w/one battery)			12
Hose Length, inches (mm)			30 (762)
Pressure Rating (psi)			7,500
Charge Time (minutes)	30	40	40
Length, inches (mm)	17 (431)	17 (431)	15.8 (401)
Weight w/Battery, lbs. (kg)	7.7 (3.4)	8.7 (4.0)	9.5 (4.3)
Warranty (battery)	2 Years/1,000 Cycles	1 Year	1 Year
Warranty (tool)	1 Year	1 Year	1 Year
Tool Body Only	CTRS6850DB	CTRS6850DB	C6G4850DB



WARNING



- Use only impact sockets and accessories with impact wrenches
- Read safety precautions on pages 594 to 597

CORDLESS

Cordless Kits



CK6850DIRL

Cordless Kits

When multiple cordless tools are needed at the same time, take a look at investing in cordless kits. Kits offer superior value and come complete with batteries, a battery charger, flashlight and tote bag. Add versatility, add mobility and add on to your cordless kit down the road with additional cordless tools. Snap-on® offers tool-only options to build your portfolio of tools. Lithium or Ni-Cad. Mix or match. Snap-on cordless allows you to operate the same tool with either Lithium or Ni-Cad batteries.

Set Contains:	CK6850DL	CK6850DIL	CK6850DIRL	CK6850DRL	CK6850CIL	CK6855DL	CK6855DIL	CK6855DIRL	CK6855DRL	CK6855CIL	CK4410DL
 CDR6850DB 18V Drill Body	•	•	•	•	•	•	•	•	•	•	
 CT6850DB 18V 1/2" Drive Impact Wrench Body		•	•	•	•	•	•	•	•	•	
 CTRS6850DB 18V Reciprocating Saw Body and blades			•	•				•	•		
 CDR4450DB 14.4V Drill Body											•
 CT4410ADB 14.4V 3/8" Drive Impact Wrench Body											•
 DBBPT13 Blue-Point® Drill Bit Set	•					•					
 CTB6185 18V Lithium Battery (2)						•	•	•	•	•	
 CTB4187 18V Ni-Cad Batteries (2)	•	•	•	•	•						
 CTB4147 14.4V Ni-Cad Batteries (2)											•
 CTC620 Battery Charger	•	•	•	•		•	•	•	•	•	•
 CTC628 Mobile Battery Charger					•						•
 CTL4918 Rechargeable Xenon® Flashlight	•	•	•	•	•	•	•	•	•	•	•
 CTTOTEA Tote Bag	•	•	•	•	•	•	•	•	•	•	•

18 Volt Impact Wrenches



CT6855



CT6850



Friction Ring



Quick Change



Pinned Anvil

18 Volt Impact Wrenches CT6855/CT6850 Series.

- 2 battery choices available – 18V Lithium or 18V Ni-Cad match the needs of any application
- Glass-filled nylon housing is rugged and provides durability and strength
- Patented air flow system routes cool air over the motor, extending tool life
- Needle bearing supported helical cut steel gears distribute even torque load from the motor
- Ergonomic cushion grip absorbs vibration and reduces user fatigue
- Super heavy duty motor is cushion mounted to reduce vibration
- Heavy duty heat sink protects switch and dissipates heat to prolong life
- One hand forward/reverse lever changes direction easily

Specifications	CT6855	CT6850	CT6850P	CT6850QCDB	CT6850DB	CT6850M	CT6850PM
Battery Type	Lithium 3.0Ahr	Ni-Cad 2.5Ahr	Ni-Cad 2.5Ahr	Ni-Cad 2.5Ahr / Lithium 3.0Ahr	Ni-Cad 2.5Ahr / Lithium 3.0Ahr	Ni-Cad 2.5Ahr	Ni-Cad 2.5Ahr
Battery Voltage	18V	18V	18V	18V	18V	18V	18V
Square Drive, inches	1/2	1/2	1/2	7/16 Hex	1/2	1/2	1/2
Anvil Type	Friction Ring	Friction Ring	Pinned	Quick Change	Friction Ring	Friction Ring	Pinned
Torque Output ft. lbs. (N•m)	400 (475)	400 (475)	400 (475)	400 (475)	400 (475)	400 (475)	406 (475)
Blow Per Minute, bpm	2,100	2,100	2,100	2,100	2,100	2,100	2,100
Free Speed, rpm	2,200	2,200	2,200	2,200	2,200	2,200	2,200
Charge Time (minutes)	30	40	40			40	40
Length, inches (mm)	9.95 (225)	9.95 (225)	9.95 (225)	9.95 (225)	9.95 (225)	9.95 (225)	9.95 (225)
Weight w/Battery, lbs. (kg)	6.8 (3.1)	7.6 (3.5)	7.6 (3.5)	*5.3 (2.4)	*5.0 (2.2)	7.5 (3.4)	7.5 (3.4)
Warranty (tool & charger)	1 Year	1 Year	1 Year	1 Year	1 Year	1 Year	1 Year
Warranty (battery)	2 Year/1,000 cycles	1 Year	1 Year	1 Year	1 Year	1 Year	1 Year
Battery (qty)	CTB6185 (1)	CTB4187 (2)	CTB4187 (2)	Not Included	Not Included	CTB4187 (2)	CTB4187 (2)
Blow Molded Storage Case	PB165	PB165	PB165	Not Included	Not Included	PB165	PB165
Charger	CTC620	CTC620	CTC620	Not Included	Not Included	CTC628	CTC628
Optional Protective Boot	CT4850B00T	CT4850B00T	CT4850B00T	CT4850B00T	CT4850B00T	CT4850B00T	CT4850B00T

CT6850DB & CT6850QCDB are tool bodies only and do not include batteries, charger or case
* battery not included in weight



WARNING



- Use only impact sockets and accessories with impact wrenches
- Read safety precautions on pages 594 to 597

CORDLESS

18 Volt Drills



CDR6855



CDR6850

18 Volt Drills

CDR6855/CDR6850 Series.

- 2 battery choices available – 18V Lithium or 18V Ni-Cad match the needs of any application
- Industrial strength, heavy duty gearing designed for drilling in metal
- Heavy duty single sleeve keyless chuck with carbide jaws grips bits securely and prevents slippage
- 22-position clutch with a 2-speed gearbox provides torque control for driving applications
- Glass-filled nylon housing is rugged and provides durability and strength
- Over-molded ergonomic cushion grip absorbs vibration and reduces user fatigue
- Stainless steel motor screens keep debris out of the motor, extending tool life
- Contoured variable speed trigger provides ergonomic comfort and superior control

Specifications	CDR6855	CDR6850	CDR6850DB
Battery Type	Lithium 3.0Ahr	Ni-Cad 2.5Ahr	Ni-Cad 2.5Ahr/Lithium 3.0Ahr
Battery Voltage	18V	18V	18V
Chuck Capacity, inches	1/2	1/2	1/2
Torque Output, in. lbs. (N•m)	450 (50.8)	450 (50.8)	450 (50.8)
Clutch Settings	22	22	22
Gear Box Type	2-speed	2-speed	2-speed
RPM (Low)	0-500	0-500	0-500
RPM (High)	0-1,800	0-1,800	0-1,800
Charge Time (minutes)	30	40	
Length, inches (mm)	10.25 (260)	10.25 (260)	10.25 (260)
Weight w/Battery, lbs. (kg)	5.5 (2.5)	6.3 (2.8)	* 3.7 (1.6)
Warranty (tool & charger)	1 Year	1 Year	1 Year
Warranty (battery)	2 Years/1,000 cycles	1 Year	1 Year
Battery (qty)	CTB6185 (1)	CTB4187 (2)	Not Included
Blow Molded Storage Case	PB165	PB165	Not Included
Charger	CTC620	CTC620	Not Included

CDR6850DB is the tool body only and does not include batteries, charger or case
 * battery not included in weight

18 Volt Reciprocating Saws



CTRS6855



CTRS6850

18 Volt Reciprocating Saws CTRS6855/CTRS6850 Series.

- 2 battery choices available – 18V Lithium or 18V Ni-Cad match the needs of any application
- 75-Amp rated, heavy duty variable speed trigger provides long life and is contoured to reduce user fatigue
- Heavy duty 14-ga. internal wiring withstands high current loads during heavy sawing
- Spring-loaded blade retention system requires no tools and ejects broken blades easily
- Non-slip cushion grip nose reduces vibration and provides positive tool control
- Heavy duty armature and balanced motor design provide smooth operation
- Turbine style cooling system reduces heat buildup, extending tool life
- Sealed nose mechanism prevents dirt and sawing debris from damaging internal components

Specifications	CTRS6855	CTRS6850	CTRS6850DB
Battery Type	Lithium 3.0Ahr	Ni-Cad 2.5Ahr	Ni-Cad 2.5Ahr/Lithium 3.0Ahr
Battery Voltage	18V	18V	18V
Stroke Length, inches (mm)	1 (25.4)	1 (25.4)	1 (25.4)
Strokes Per Minute	2,300	2,300	2,300
Charge Time (minutes)	30	40	
Length, inches (mm)	17 (431)	17 (431)	17 (431)
Weight w/Battery, lbs. (kg)	7.7 (3.4)	8.7 (4.0)	6.0 (2.7)
Warranty (tool & charger)	1 Year	1 Year	1 Year
Warranty (battery)	2 Years/1,000 cycles	1 Year	1 Year
Battery (qty)	CTB6185 (1)	CTB4187 (2)	Not Included
Blow Molded Storage Case	*CTRS4850-34	*CTRS4850-34	Not Included
Charger	CTC620	CTC620	Not Included

CTRS6850DB is the tool body only and does not include batteries, charger or case
*Optional case

Grease Gun

18 Volt Grease Guns

- All steel heavy duty gearing provides strength and durability
- High pressure 7,500 psi hose stays flexible in cold weather
- Planetary-spur gear system resists wear and stripping

Specifications	CGG4850	CGG4850DB	CGG4850NC
Battery Type	Ni-Cad 2.5Ahr	Ni-Cad 2.5Ahr	Ni-Cad 2.5Ahr
Battery Voltage	18V	18V	18V
Capacity, Tubes Per Charge	12	12	12
Hose Length, inches (mm)	30 (762)	30 (762)	30 (762)
Charge Time (minutes)	40		
Length, in. (mm)	15.8 (401)	13 (330)	15.8 (401)
Weight w/Battery, lbs. (kg)	9.5 (4.3)	7.5 (3.4)	8.0 (3.6)
Warranty (tool & charger)	1 Year	1 Year	1 Year
Warranty (battery)	1 Year	1 Year	1 Year
Battery (qty)	CTB4187 (2)	Not Included	Not Included
Blow Molded Storage Case	CGG4850-18	CGG4850-18	CGG4850-18
Charger	CTC620	Not Included	Not Included

CGG4850DB is the tool body only and does not include batteries, charger or case



CGG4850



WARNING



- Use only impact sockets and accessories with impact wrenches
- Read safety precautions on pages 594 to 597

CORDLESS

14.4 Volt Impacts & Drills



CT4410A



CDR4450A



Friction Ring



Quick Change



Pinned Anvil

14.4 Volt Impact Wrenches

- Compact, balanced, glass-filled nylon housing provides durability and strength
- Built-in LED illuminates work area
- Cushion mounted heavy duty motor reduces vibration
- Patented air flow system routes cool air over the motor, extending tool life
- Over-molded ergonomic cushion grip absorbs vibration and reduces user fatigue
- Heat treated alloy gears provide power and durability
- Heavy duty heat sink protects switch and dissipates heat to prolong life
- One hand forward/reverse lever changes direction easily

14.4 Volt Drills

- Built in LED illuminates work area
- Rare earth magnet motor increases power and efficiency
- 22-position clutch with a 2-speed gearbox provides torque control
- Over molded ergonomic cushion grip absorbs vibration and reduces user fatigue
- 1/2" capacity chuck with carbide jaws provides secure bit retention and easy changes
- Heavy duty heat sink protects switch and dissipates heat to prolong life
- One hand forward/reverse lever changes direction easily
- Single sleeve chuck allows for easy bit changes

Specifications	Impact Wrenches							Drills	
	CT4410A	CT4410AP	CT4410AQC	CT4410ADB	CT4450A	CT4450AP	CT4450ADB	CDR4450	CDR4450DB
Battery Type	Ni-Cad 2.5 Ahr	Ni-Cad 2.5 Ahr	Ni-Cad 2.5 Ahr	Ni-Cad 2.5 Ahr	Ni-Cad 2.5 Ahr	Ni-Cad 2.5 Ahr	Ni-Cad 2.5 Ahr	Ni-Cad 2.5 Ahr	Ni-Cad 2.5 Ahr
Battery Voltage	14.4V	14.4V	14.4V	14.4V	14.4V	14.4V	14.4V	14.4V	14.4V
Square Drive, inches	3/8	3/8	1/4 Hex	3/8	1/2	1/2	1/2	1/2	1/2
Anvil Type	Friction Ring	Pinned	Quick Change	Friction Ring	Friction Ring	Pinned	Friction Ring		
Torque Output ft. lbs. (N•m)	150 ft. lbs. (203)	150 ft. lbs. (203)	150 ft. lbs. (203)	150 ft. lbs. (203)	150 ft. lbs. (203)	150 ft. lbs. (203)	150 ft. lbs. (203)	400 in. lbs. (45.2)	400 in. lbs. (45.2)
Gear Box Type								2-speed	2-speed
Clutch Settings								22	22
Free Speed, rpm	2,280	2,280	2,280	2,280	2,280	2,280	2,280	0-350/0-1,500	0-350/0-1,500
Blows Per Minute, bpm	2,900	2,900	2,900	2,900	2,900	2,900	2,900		
Charge Time (minutes)	35	35	35		35	35		35	
Length, inches (mm)	6.4 (163)	6.4 (163)	6.4 (163)	6.4 (163)	6.4 (163)	6.4 (163)	6.4 (163)	7.8 (199)	7.8 (199)
Weight w/Battery, lbs. (kg)	4.6 (2.1)	4.6 (2.1)	4.6 (2.1)	2.7 (1.2)	4.6 (2.1)	4.6 (2.1)	2.7 (1.2)	4.9 (2.2)	3.0 (1.3)
Warranty (tool & charger)	1 Year	1 Year	1 Year	1 Year	1 Year	1 Year	1 Year	1 Year	1 Year
Warranty (battery)	1 Year	1 Year	1 Year	1 Year	1 Year	1 Year	1 Year	1 Year	1 Year
Battery (qty)	CTB4147 (2)	CTB4147 (2)	CTB4147 (2)	Not Included	CTB4147 (2)	CTB4147 (2)	Not Included	CTB4147 (2)	Not Included
Blow Molded Case	PB165	PB165	PB165	Not Included	PB165	PB165	Not Included	PB165	Not Included
Charger	CTC620	CTC620	CTC620	Not Included	CTC620	CTC620	Not Included	CTC620	Not Included

CT4410ADB, CT4450ADB and CDR4450DB are tool body only and do not include batteries, chargers or case.

7.2 Volt Impact/Screwdrivers



CT561



CTS561CL



CTS561

7.2 Volt Impact Wrenches

- Small, lightweight design is easy to control and reduces user fatigue
- Oversized forward/reverse toggle trigger for versatility
- Integrated soft grip handle provides comfort and positive tool control
- Tapered, lightweight, aluminum nose gets into restricted applications easily

7.2 Volt Screwdrivers

- 1/4" quick change hex chuck provides secure bit retention
- 6-position clutch for added torque control (CTS561CL only)
- Small, lightweight design maneuvers easily in restricted access applications
- Up to 250 in. lbs. of manual torque can be applied to break stubborn fasteners loose
- Gearless spindle lock has no teeth or gears to break or chip

Specifications	Impact Wrenches		Screwdrivers			
	CT561	CT561DB	CTS561	CTS561DB	CTS561CL	CTS561CLDB
Battery Type	Ni-Cad 700 mAmp	Ni-Cad 700 mAmp	Ni-Cad 700 mAmp	Ni-Cad 700 mAmp	Ni-Cad 700 mAmp	Ni-Cad 700 mAmp
Battery Voltage	7.2V	7.2V	7.2V	7.2V	7.2V	7.2V
Drive Size	3/8" Sq. Dr.	3/8" Sq. Dr.	1/4" Hex	1/4" Hex	1/4" Hex	1/4" Hex
Torque Output, in. lbs. (N•m)	600 (67.8)	600 (67.8)	60 (6.78)	60 (6.78)	60 (6.78)	60 (6.78)
Clutch Settings					6	6
Free Speed, rpm	2,500	2,500	375	375	375	375
Blows Per Minute, bpm	3,000	3,000				
Charge Time (minutes)	55	55	55	55	55	55
Length, inches (mm)	6.4 (136)	6.4 (136)	4.6 (117)	4.6 (117)	5.2 (132)	5.2 (132)
Weight w/Battery, lbs. (kg)	1.7 (.77)	1.7 (.77)	1.2 (.55)	1.2 (.55)	1.5 (.68)	1.5 (.68)
Warranty (tool & charger)	1 Year	1 Year	1 Year	1 Year	1 Year	1 Year
Warranty (battery)	1 Year	1 Year	1 Year	1 Year	1 Year	1 Year
Battery (qty)	CTB5172 (2)	Not Included	CTB5172 (2)	Not Included	CTB5172 (2)	Not Included
Blow Molded Case/Soft Case	CTSC1	Not Included	PB166	Not Included	PB166	Not Included
Charger	CTC572	Not Included	CTC572	Not Included	CTC572	Not Included

*CTS561DB, CTS561CLDB & CT561DB are the tool bodies only and do not include batteries, charger or case



WARNING



- Use only impact sockets and accessories with impact wrenches
- Read safety precautions on pages 594 to 597

CORDLESS

Flashlights



CTLED4918HO

CTLED4918HO Rechargeable LED Flashlight.

- Super bright 200 lumens LED light
- 120° pivoting head allows for greater versatility
- Operates on 14.4 or 18 Volt Lithium or Ni-Cad slide-on batteries



CTL4918

CTL4918 Rechargeable Xenon® Flashlight.

- Heavy duty 11 Watt Xenon bulb
- 2 position switch partially depresses for short bursts or full on
- Operates on 14.4 or 18 Volt Lithium or Ni-Cad slide on batteries



CTLED566

CTLED566 Flashlight.

- Features 6 super bright LED bulbs to illuminate the work area
- Durable glass filled nylon housing holds up in tough environments

Chargers/Batteries



CTB6185



CTB4187



CTB5172



CTC620



CTC628

18 Volt Lithium Batteries

- 50% more run time, 36% lighter, 50% more life than Ni-Cad batteries
- 3.0 Ah high capacity cells are the ideal choice for tools used in continuous run applications
- No self-discharge
- Dual microprocessors provide optimum battery performance
- 4 LED fuel gauge indicates battery charge and condition

14.4 Volt & 18 Volt Ni-Cad Batteries

- 2.5 Ah high capacity cells for long life
- No memory effect for maximum charging
- Glass-filled nylon housing for durability

Batteries

Stock No.	Type	Voltage	Style	Charge Time (minutes)	Used With
CTB5172	Ni-Cad	7.2	Stick	55	CTS561, CTS561CL, CT561, CTLED566
CTB3092	Ni-Cad	9.6	Tower	45	CT30, CDR20, lights
CTB312	Ni-Cad	12	Tower	45	CDR30, CT310, CT350, lights
CTB3124	Ni-Cad	12	Tower	45	CDR30, CT310, CT350, lights
CTB314	Ni-Cad	14.4	Tower	45	CDR40, CDR45, CT3450, lights
CTB4147	Ni-Cad	14.4	Slide-on	40	CDR4450 CT4110, CT4450, lights
CTB3187	Ni-Cad	18	Tower	40	CDR3850, CT3850, lights
CTB4187	Ni-Cad	18	Slide-on	40	CDR4850, CDR4850A, CDR6850, CGG4850, CT4850, CT4850HO, CT6850, CTRS4850, CTRS6850, lights
CTB6185	Lithium	18	Slide-on	30	CDR4850A, CDR6850, CDR6855, CT4850HO, CT6850, CT6855, CTRS6850, CTRS6855 and all lights with a slide-on style base or any model with a green battery terminal connector

Chargers

Stock No.	Type	Application
CTC572	7.2V Ni-Cad Charger	Charges all 7.2V Ni-Cad batteries
CTC578	7.2 VDC Mobile Charger	Charges all 7.2V Ni-Cad batteries
CTC420	Multi-volt Ni-Cad Charger	Charges all 9.6V, 14.4V and 18V Ni-Cad slide-on or tower style batteries
CTC428	Multi-volt Ni-Cad Mobile Charger	Charges all 9.6V, 14.4V and 18V Ni-Cad slide-on or tower style batteries
CTC620	Dual Chemistry Charger	Charges all 14.4V / 18V Ni-Cad or Lithium slide-on style batteries
CTC628	12 VDC Dual Chemistry Mobile Charger	Charges all 14.4V / 18V Ni-Cad or Lithium slide-on style batteries

Australia	Charger	Stock No.	Application
Chargers:	Dual Chemistry Charger	CTCFA620	Charges all 14.4V / 18V Ni-Cad or Lithium slide-on style batteries
	Multi-Volt Ni-Cad Charger	CTCFA420	Charges all 9.6V, 12V, 14.4V and 18V Ni-Cad slide-on or tower style batteries
	7.2V Ni-Cad Charger	CTCA572	Charges all 7.2V batteries
Tools:	18V Impact Wrench	CTA6850	CTA6855
	18V Drill	CDRA6850	CDRA6855
	18V Reciprocating Saw	CTRSA6850	CTRSA6855
	14.4V Impact Wrench	CTA4410A	
	14.4V Drill	CDRA4450	
	7.2V Screwdriver	CTSA561	
	7.2V Screwdriver w/ Clutch	CTSA561CL	
7.2V Impact Wrench	CTA561		

United Kingdom	Charger	Stock No.	Application
Chargers:	Dual Chemistry Charger	CTCFU620	Charges all 14.4V / 18V Ni-Cad or Lithium slide-on style batteries
	Multi-Volt Ni-Cad Charger	CTCFU420	Charges all 9.6V, 12V, 14.4V and 18V Ni-Cad slide-on or tower style batteries
	Battery Charger	CTCU572	Charges all 7.2V batteries
Tools:	18V Impact Wrench	CTU6850	CTU6855
	18V Drill	CDRU6850	CDRU6855
	18V Reciprocating Saw	CTRSU6850	CTRSU6855
	14.4V Impact Wrench	CTU4410A	
	14.4V Drill	CDRU4450	
	7.2V Screwdriver	CTSU561	
	7.2V Screwdriver w/Clutch	CTSU561CL	
7.2V Impact Wrench	CTU561		

Korea	Charger	Stock No.	Application
Chargers:	Dual Chemistry Charger	CTCFK620	Charges all 14.4V / 18V Ni-Cad or Lithium slide-on style batteries
Tools:	18V Impact Wrench	CTK6850	CTK6855
	18V Drill	CDRK6850	CDRK6855
	18V Reciprocating Saw	CTRSK6850	CTRSK6855

Europe	Charger	Stock No.	Application
Chargers:	Dual Chemistry Charger	CTCFE620	Charges all 14.4V / 18V Ni-Cad or Lithium slide-on style batteries
	Multi-Volt Ni-Cad Charger	CTCFE420	Charges all 9.6V, 12V, 14.4V and 18V Ni-Cad slide-on or tower style batteries
	Battery Charger	CTCE572	Charger for 7.2V tools
Tools:	18V Impact Wrench	CTE6850	CTE6855
	18V Drill	CDRE6850	CDRE6855
	18V Reciprocating Saw	CTRSE6850	CTRSE6855
	14.4V Impact Wrench	CTE4410	
	14.4V Drill	CDRE4450	
	7.2V Screwdriver	CTSE561	
	7.2V Screwdriver w/ Clutch	CTSE561CL	
7.2V Impact Wrench	CTE561		

Japan	Charger	Stock No.	Application
Chargers:	Dual Chemistry Charger	CTCJ620	Charges all 14.4V / 18V Ni-Cad or Lithium slide-on style batteries
	Multi-Volt Ni-Cad Charger	CTCJ420	Charges all 9.6V, 12V, 14.4V and 18V Ni-Cad slide-on or tower style batteries
	Battery Charger	CTCJ572	Charges all 7.2V batteries
Tools:	18V Impact Wrench	CTJ6850	CTJ6855
	18V Drill	CDRJ6850	CDRJ6855
	18V Reciprocating Saw	CTRSJ6850	CTRSJ6855
	14.4V Impact Wrench	CTJ4410	
	14.4V Drill	CDRJ4450	
	7.2V Screwdriver	CTSJ561	
	7.2V Screwdriver w/ Clutch	CTSJ561CL	
7.2V Impact Wrench	CTJ561		

All Countries	Charger	Stock No.	Application
Chargers:	12 VDC Mobile Charger	CTC628	Charges all 14.4V / 18V Ni-Cad or Lithium slide-on style batteries
	12 VDC Mobile Charger	CTC428	Charges all 9.6V, 12V, 14.4V and 18V Ni-Cad slide-on or tower style batteries
	7.2 VDC Mobile Charger	CTC578	Charges all 7.2V batteries

Screwdriver Accessories/Polisher/Engraver



CTEXTSET Quick Change Extension Set.

- Includes: CTEXT6 and CTEXT12 quick change extensions plus a T15 Torx® bit (1/4" shank) and a Phillips® bit (power groove hex shank)
- Ideal companion to the CTS561 and CTS561CL series screwdrivers where extended reach is needed



ETBS360A 3.6 Volt Screwdriver Kit.

- Forward, reverse and manual modes
- 1/4" slip chuck accommodates most 1/4" power bits
- Includes #2 Phillips and 5.5 slotted bits
- 3.6V Ni-Cad battery recharges in 1 hour



CTS561HOLSTR Bit Holster.

- Holster for CTS561/CTS561CL series cordless screwdrivers
- Includes 3 flat tip bits (3/16", 7/32", 1/4"), 3 Phillips bits (#0, #1, #2) and 2 Torx bits (T15, T25)



ETB1580A Polisher.

- 6 position speed setting allows user to dial in desired speed
- Variable speed trigger lets user vary the speed within the range and have control over polishing speed
- Push button spindle lock for quick and easy pad changes



CTS561BITSET Quick Change Bit Set.

- Quick change bit set for Snap-on CTS561 and CTS561CL cordless screwdrivers plus other power drivers
- Assortment of 22 popular sized bits (all 3" long) plus a 1/4" square drive (2" long) in storage case



GA236B Engraver.

- Marks all materials
- Includes solid carbide tip
- Optional heavy duty tip



WARNING



• Read safety precautions on pages 594 to 597

It's About Making The Best Tool. And Then Making It Better.

For decades, Snap-on has built a reputation for lightweight, ergonomic tools that combine power and unmatched durability.

- Snap-on delivers tools that help you finish the job, not stand in the way of it.
- Snap-on has taken air to a new level by fitting heavy duty components into smaller places, giving you more power without more weight.

Unsurpassed Power And Speed.

Big torque and speed come from innovation—inside and out.

- Twin hammer impact mechanisms—Unique hammer design results in more power per blow.
- 8-vane rotors—More vanes in the rotor mean smoother power transfer to the impact hammers and less power lost in the motor.

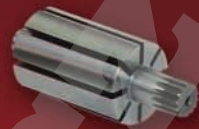
Making Your Job Easier.

Really, this is what it's all about; air tools with features to make everyday tasks simpler.

- Better balance—For more user control.
- Compact nose design—Allows easy access into tight spaces.

Durability.

Snap-on® air tools feature heavy duty components made to resist the everyday wear and tear of the shop.



- One-piece magnesium housings—Keeps internal components in better alignment. Magnesium is incredibly tough and lightweight.
- Oil-bath lubrication—Unique technology keeps internal components continuously lubricated for smooth operation and longer tool life.

Ergonomic Design.

Snap-on power tools are designed to work comfortably and feel natural.

- Reduced vibration—Smooth-flowing motors and shock absorption reduce the stress from vibration.
- Tip-valve trigger—For an intuitive flow of power from the user to the tool.
- Comfort grips—Over-molded, cushion grips further absorb shock and take the strain out of repetitive use.



Impact Wrench

Stock No.	Drive Size, inches (mm)	Max. Torque, ft. lbs. (N·m)	Free Speed RPM	Blows per Minute	Air Consumption, Free Speed, CFM (SCFM) [L/MIN]	Vibration Level, m/s ²	Sound Level dBa Pressure	Length, inches (mm)	Weight, lbs. (kg)
IM1800	1 (25)	1,800 (2,440)	5,500	900	6.7 (48) [190]	8.5	104	14 (356)	15 (6.8)
IM1800L	1 (25)	1,800 (2,440)	5,500	900	6.7 (48) [190]	8.5	104	20 (508)	16 (7.3)
AT1300A	1 (25)	3,000 (4,068)	4,000	505	5.3 (38) [150]	4.4	103	21 (533)	25.6 (11.6)
AT1300AL	1 (25)	2,700 (3,661)	4,000	505	5.3 (38) [150]	4.4	103	27 (686)	28 (12.7)
MG1200	3/4 (19)	1,200 (1,627)	7,000	1,200	6.4 (46) [181]	2.02	102	8 (203)	8 (3.6)
MG1200L	3/4 (19)	1,200 (1,627)	7,000	1,200	6.4 (46) [181]	2.02	102	10 (254)	9 (4.09)
MG1200XL	3/4 (19)	1,200 (1,627)	7,000	1,200	6.4 (46) [181]	2.02	102	13 (330)	10 (4.5)
MG1200P	3/4 (19)	1,200 (1,627)	7,000	1,200	6.4 (46) [181]	2.02	102	8 (203)	8 (3.6)
AT760	3/4 (19)	1,100 (1,492)	4,000	905	5.6 (40) [159]	<4.3	114.4	9.5 (241)	8.5 (3.8)
AT760L	3/4 (19)	1,100 (1,492)	4,000	905	5.6 (40) [159]	<4.3	114.4	14.6 (371)	9.8 (4.4)
MG725	1/2 (13)	810 (1,098)	9,800	1,270	4.0 (29) [113]	6.6	99.9	7.7 (194)	4.8 (2.2)
MG725L	1/2 (13)	810 (1,098)	9,800	1,270	4.0 (29) [113]	6.6	99.9	9.7 (245)	5.0 (2.3)
MG725P	1/2 (13)	810 (1,098)	9,800	1,270	4.0 (29) [113]	6.6	99.9	7.7 (194)	4.8 (2.2)
MG3255	1/2 (13)	325 (440)	8,200	1,400	2.4 (17) [68]	4.54	96.6	6.1 (155)	2.8 (1.3)
MG3255L	1/2 (13)	325 (440)	8,200	1,400	2.4 (17) [68]	4.54	96.6	7.6 (193)	2.9 (1.3)
MG3255P	1/2 (13)	326 (442)	8,200	1,400	2.4 (17) [68]	4.54	96.6	6.1 (155)	2.8 (1.3)
MG3255LP	1/2 (13)	325 (440)	8,200	1,400	2.4 (17) [68]	4.54	96.6	7.6 (193)	2.9 (1.3)
AT123A	1/2 (13)	425 (576)	9,000	1,000	2.8 (20) [79]	13	108	7.3 (185)	5.8 (2.6)
AT123AL	1/2 (13)	425 (576)	9,000	1,000	2.8 (20) [79]	13	108	9.3 (236)	6.1 (2.8)
AT555B	1/2 (13)	550 (745)	7,500	1,000	2.2 (16) [62]	3.75	100	7.8 (198)	5.8 (2.6)
AT560	1/2 (13)	520 (705)	7,500	1,205	3.9 (28) [111]	<6.75	111	6.7 (170)	4.6 (2.1)
ATC500	1/2 (13)	525 (712)	10,500	1,250	3.5 (25) [99]	<2.5	95.5	7.8 (198)	5 (2.3)
MG325	3/8 (10)	325 (440)	8,200	1,400	2.4 (17) [68]	4.54	96.6	6.1 (155)	2.8 (1.3)
MG325P	3/8 (10)	325 (440)	8,200	1,400	2.4 (17) [68]	4.54	96.6	6.1 (155)	2.8 (1.3)
AT380	3/8 (10)	180 (244)	11,000	1,400	2.7 (19) [76]	3.5	105	6.3 (160)	2.7 (1.2)
AT321	3/8 (10)	175 (237)	11,000	1,500	3.8 (27) [108]	9.8	109	6.1 (155)	2.9 (1.3)
AT365	3/8 (10)	250 (339)	9,000	1,250	2.7 (19) [76]	6.5	107.7	6.5 (165)	2.7 (1.2)
AT351	3/8 (10)	175 (237)	9,700	1,200	2.5 (18) [71]	3.09	109.2	7.6 (194)	2.5 (1.2)
AT235MCA	1/4 (6)	25 (34)	13,000	2,900	1.67 (12) [47]	<2.5	95.1	6.2 (158)	1.4 (.64)

Ratchet

Stock No.	Drive Size, inches (mm)	Torque Range, ft.lbs. (N·m)	Free Speed RPM	Air Consumption, Free Speed, CFM (SCFM) [L/MIN]	Vibration Level, m/s ²	Sound Level dBa Pressure	Length, inches (mm)	Weight, lbs. (kg)
AT705B	1/2 (13)	5 - 50 (6 - 68)	150	3.0 (22) [85]	8.7	89	10.7 (273)	2.5 (1.14)
FAR72C	3/8 (10)	5 - 65 (6 - 88)	225	2.7 (19) [76]	6.4	90	11.8 (300)	3 (1.3)
FAR7200	3/8 (10)	5 - 70 (7 - 97) open mode; 5-50 (7-67) quiet mode	260 (open mode); 200 (quiet mode)	4.5 (32) [127]	6.4	93 (open mode); 87 (quiet mode)	12.1 (308)	3 (1.3)
FAR2505	3/8 (10)	0 - 35 (6 - 47)	235	1.4 (10) [40]	6.2	85	7.7 (197)	1.4 (.6)
AT704	3/8 (10)	5 - 55 (6 - 75)	200	3.9 (28) [111]	<3.9	104	10.5 (266)	3.3 (1.5)
AT700F	3/8 (10)	5 - 45 (6 - 61)	150	3.0 (22) [85]	8.7	89	10.1 (257)	3.5 (1.6)
AT702	3/8 (10)	5 - 60 (6 - 81)	200	3.0 (22) [85]	12.6	95	10.4 (265)	2.4 (1.1)
AT738	3/8 (10)	0 - 60 (0 - 81)	300	4.0 (29) [113]	5.9	102	11.2 (285)	3 (1.3)
FAR2500	1/4 (6)	0 - 35 (6 - 47)	235	1.4 (10) [40]	6.2	85	7.8 (197)	1.4 (.66)
FAR25A	1/4 (6)	5 - 25 (6 - 34)	225	1.4 (10) [40]	6.2	88	6.7 (171)	1.2 (.57)
AT203	1/4 (6)	5 - 25 (6 - 34)	285	3.1 (22) [88]	<4.4	100	7.4 (188)	1.2 (.57)
AT200D	1/4 (6)	5 - 20 (6 - 27)	150	1.4 (10) [40]	3.3	85	8.7 (222)	1.1 (.50)
AT204	1/4 (6)	5 - 22 (6 - 30)	275	2.4 (17) [68]	<1.7	91	4.9 (127)	1.4 (.66)

Drill

Stock No.	Chuck Size, inches (mm)	Rated Power, hp (kW)	Torque Range, in.lbs. (N·m)	Free Speed RPM	Air Consumption, Free Speed, CFM (SCFM) [L/MIN]	Vibration Level, m/s ²	Sound Level dBa Pressure	Length, inches (mm)	Weight, lbs. (kg)
PDR5000A	1/2 (13)	0.45 (.33)	0 - 300 (0 - 34)	450	3.8 (27) [108]	<2.5	80	8.7 (222)	3 (1.3)
AT5000	1/2 (13)	0.45 (.33)	0 - 120 (0 - 14)	490	3.8 (27) [108]	<2.5	82	9 (229)	3.8 (1.7)
PDR3000A	3/8 (10)	0.45 (.33)	0 - 50 (0 - 6)	2,500	3.5 (25) [99]	<2.5	80	7 (178)	2.5 (1.1)
AT3000	3/8 (10)	0.2 (.15)	0 - 35 (0 - 4)	2,000	3.5 (25) [99]	<2.5	105	7.6 (194)	3.2 (1.4)
AT811	3/8 (10)	0.25 (.19)	0 - 55 (0 - 6)	1,320	3.4 (24) [95]	<1.0	110	8.2 (208)	2.5 (1.1)
AT184	5/16 (8)	-	-	1,800	8.4 (60) [238]	<1.0	84	7.9 (201)	3.1 (1.4)
AT801MCA	1/4 (6)	0.25 (.19)	0 - 18 (0 - 2)	1,800	9.4 (68) [266]	<2.5	96.4	7.2 (183)	1.5 (.68)

Hammer

Stock No.	Bore Diameter, inches (mm)	Blows per Minute	Piston Stroke, inches	Shank Opening, inches (mm)	Air Consumption, Free Speed, CFM (SCFM) [L/MIN]	Vibration Level, m/s ²	Sound Level dBa Pressure	Length, inches (mm)	Weight, lbs. (kg)
PH3050A	3/4 (19)	2,500	3	0.401 (10.1)	1.8 (13) [51]	1.5	94	8.9 (227)	5.9 (2.7)
AT2050	3/4 (19)	3,400	2.75	0.401 (10.1)	2.5 (18) [71]	3.0	99	7.4 (187)	4.6 (2.1)



WARNING



• Read safety messages about each type of Air Tool on the following pages and the safety precautions on pages 594 to 597

Quick Reference Chart

Finishing Tool

Stock No.	Pad Size, inches (mm)	Style	Rated Power, hp (kW)	Free Speed RPM	Spindle Thread, inches	Air Consumption, Free Speed, CFM (SCFM) [L/MIN]	Vibration Level, m/s ²	Sound Level dBa Pressure	Length, inches (mm)	Weight, lbs. (kg)
PSF4312	3 (76)	Orbital	0.25 (.19)	12,000	1/4-20	2 (14) [57]	2.1	76	3 (76)	1.4 (.65)
PS4512	5 (127)	Orbital	0.25 (.19)	12,000	5/16-24	2 (14) [57]	2.3	77	5 (127)	1.7 (.77)
PS4612	6 (152)	Orbital	0.25 (.19)	12,000	5/16-24	2 (14) [57]	2.3	81	6 (152)	2.5 (1.14)
PSF4612	6 (152)	Orbital Finishing	0.25 (.19)	12,000	5/16-24	2 (14) [57]	2.1	81	6 (152)	2.4 (1.11)
PS4609	6 (152)	G geared (NV)	0.42 (.31)	1,000	3/8	3 (21.7) [85]	5.9	82	11 (281)	3.7 (1.70)
PS4609V	6 (152)	G geared (V)	0.42 (.31)	1,000	3/8	3 (21.7) [85]	5.9	82	11 (281)	3.7 (1.70)
PS4809	8 (203)	G geared (NV)	0.42 (.31)	1,000	3/8	3 (21.7) [85]	5.9	82	11 (281)	4 (1.82)
PS4809V	8 (203)	G geared (V)	0.42 (.31)	1,000	3/8	3 (21.7) [85]	5.9	82	11 (281)	4 (1.82)
AT408	8 (203)	G geared (NV)	0.5 (.37)	850	5/16-24	5 (36) [142]	3.7	87	11 (281)	4.8 (2.18)
AT411A	6 (152)	Dual Action	0.5 (.37)	10,000	5/16-18	5 (36) [142]	3.7	79	8 (203)	4.7 (2.14)
AT465B	5 (127)	Angle	0.8 (.59)	6,100	5/16-11	4.8 (34) [136]	<2.5	84	9.7 (248)	2.9 (1.32)
AT450B	7 (177)	Angle	1 (.74)	5,100	5/16-11	4.8 (34) [136]	5.6	84	15.7 (400)	5.5 (2.50)
AT460B	7 (177)	Verticle	0.67 (.49)	4,500	5/16-11	4.8 (34) [136]	<2.5	83	7.3 (185)	5 (2.27)
AT425R	5 (127)	Reversible Hi-speed	0.45 (.33)	13,000	7/16-20	4.3 (31) [122]	<0.8	93	5.3 (135)	2.8 (1.28)
AT475A	—	In Line	—	1,800	—	2.3 (17) [65]	14.9	87	16 (406)	6.8 (3.09)
AT435A	—	Jitter Bug	0.5 (.37)	8,000	—	3 (22) [85]	4.5	84	6.7 (171)	4.6 (2.09)
AT450BP	7 (177)	Angle Polisher	1 (.74)	5,100	5/8-11	4.8 (34) [136]	<2.5	84	15.7 (400)	5.5 (2.50)
AT460BP	7 (177)	Vertical Polisher	0.67 (.49)	4,500	5/8-11	4.8 (34) [136]	<2.5	83	7.3 (185)	5 (2.27)
AT401MCA	3 (76)	Micro Surface Prep	0.25 (.19)	15,000	1/4-20	2.1 (15) [59]	<2.5	84	4.7 (119)	.97 (.44)
AT402MCA	3 (76)	Micro Sander	0.25 (.19)	15,000	5/16-24	2.1 (15) [59]	<2.5	84	5.2 (133)	1.1 (.50)
AT403MCA	3 (76)	Micro Polisher	0.25 (.19)	6,000	5/16-24	2.2 (16) [62]	<2.5	86	5.6 (143)	1.3 (.60)
PT280THUGA	—	Material Removal Tool	0.45 (.33)	3,500	—	4 (28) [113]	2.8	85	12 (304)	2.4 (1.09)

Cutting Tools

Stock No.	Wheel Size, inches (mm)	Rated Power, hp (kW)	Free Speed RPM	Air Consumption, Free Speed, CFM (SCFM) [L/MIN]	Vibration Level, m/s ²	Sound Level dBa Pressure	Length, inches (mm)	Weight, lbs. (kg)
PT250R	3 (76)	0.5 (.37)	22,000	2.7 (19) [76]	<2.5	84	7.2 (183)	1.2 (.55)
AT154R	4 (101.5)	0.9 (.67)	16,000	3.6 (26) [102]	<.6	104	14.8 (376)	3.1 (1.4)
AT157R	3 (76)	0.45 (.33)	20,000	3.5 (25) [99]	<3.8	100	7.3 (185)	1.9 (.86)
AT215	2 (50)	0.5 (.37)	15,000	3 (22) [85]	<2.86	73	7.4 (188)	1.8 (.82)
AT415B	4 1/2 (114)	0.86 (.64)	12,000	3.2 (23) [91]	5.1	87	10 (254)	4.2 (1.9)

Grinders

Stock No.	Free Speed RPM	Air Consumption, Free Speed, CFM (SCFM) [L/MIN]	Vibration Level, m/s ²	Sound Level dBa Pressure	Length, inches (mm)	Weight, lbs. (kg)
AT192A	11,000	1 (7) [28]	10.1	94	9.3 (235)	1.7 (.80)
AT194A	8,250	.70 (5) [20]	<6.6	87	6.7 (175)	1 (.45)
AT185		11.3 (81) [320]	<2.5	48.6	9.3 (235)	2.6 (1.2)
AT195		4 (29) [113]	<2.5	99.6	10 (254)	2.8 (1.3)
AT180C	3,500	4 (29) [113]	4.3	97	7.6 (194)	1.9 (.88)

Die Grinder

Stock No.	Collet Size, inches	Rated Power, hp (kW)	Free Speed RPM	Air Consumption, Free Speed, CFM (SCFM) [L/MIN]	Vibration Level, m/s ²	Sound Level dBa Pressure	Length, inches (mm)	Weight, lbs. (kg)
PT100	1/4	0.3 (.2)	25,000	1.4 (10) [40]	3.8	84	5.8 (149)	1.6 (.73)
PT110	1/4	0.3 (.2)	25,000	1.4 (10) [40]	3.8	84	5.6 (144)	1.9 (.86)
PT200R	1/4	0.5 (.3)	22,000	2.7 (19) [76]	3.8	84	6.7 (170)	1.8 (.83)
PT210R	1/4	0.5 (.3)	22,000	3 (22) [85]	<2.5	84	6.6 (168)	2.0 (.93)
PT200LR	1/4	0.5 (.3)	22,000	1.4 (10) [40]	2.6	84	10.6 (269)	2.0 (.91)
AT115	1/4	0.2 (.15)	22,000	4 (29) [113]	<2.5	102	6.5 (165)	1.3 (.61)
AT118	1/4	0.2 (.15)	20,000	2.1 (15) [59]	2.5	104	5.5 (140)	1.1 (.50)
AT105	1/4	0.2 (.15)	22,000	4 (29) [113]	<2.5	102	6.5 (165)	1.3 (.61)
AT109*	1/4	0.2 (.15)	20,000	2.1 (15) [59]	2.5	104	5.5 (140)	1.1 (.50)
AT119DGGK	1/4	0.2 (.15)	2,000	2.1 (15) [59]	2.5	100	6.8 (173)	1.1 (.50)
AT1070A	1/8		75,000	1 (7) [28]	2.0	72	5.3 (135)	.55 (.25)
AT1070RA	1/8		75,000	1 (7) [28]	2.0	72	5.9 (150)	.46 (.21)

* See p. 280 for AT109DGGK Die Grinder Kit specifications.

1", 3/4" Drive Impact Wrenches



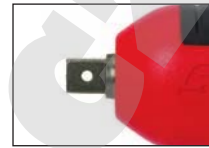
IM1800



6" Long Anvil (L)



MG1200



Thru-Hole Anvil (P)



3" Long Anvil (L)



6" Extra Long Anvil (XL)

Super Duty Air Impact Wrenches

IM1800 Series 1" Drive.

- Convenient D-handle and side handle for less user fatigue
- Lightweight aluminum nose for better balance
- Standard and long anvils are thru-hole design for positive socket retention
- High torque to remove stubborn fasteners quicker
- Lightweight aluminum housing for less user fatigue
- 3-position speed control and full power reverse have more control when tightening or removing fasteners
- Twin hammer mechanism is durable and hard hitting, using fewer parts resulting in less down time
- Sealed in oil bath lubrication keeps impact mechanism lubricated for less wear and longer tool life

Super Duty Air Impact Wrenches

MG1200 Series 3/4" Drive.

- 1 piece magnesium housing assures precision alignment of components and reduces vibration
- Continuous oil bath lubrication reduces wear and increases life
- Twin hammer mechanism delivers hard hitting blows with fewer moving parts for longer tool life
- 6 vane rotor delivers maximum torque and speed to remove stubborn fasteners
- Cushion grip variable speed trigger reduces user fatigue
- Balanced design distributes weight evenly to increase control
- Anvil stops with release of the trigger to prevent throwing fasteners
- 1 hand reverse button for easy operation

Super Duty

Specifications	IM1800	IM1800L	MG1200	MG1200L	MG1200XL	MG1200P
Drive Size, inches (mm)	1 (25)	1 (25)	3/4 (19)	3/4 (19)	3/4 (19)	3/4 (19)
Max. Torque, ft. lbs. (N•m)	1,800 (2,440)	1,800 (2,440)	1,200 (1,627)	1,200 (1,627)	1,200 (1,627)	1,200 (1,627)
Free Speed RPM	5,500	5,500	7,000	7,000	7,000	7,000
Blows per Minute	900	900	1,200	1,200	1,200	1,200
Extended Anvil Length, inches (mm)		6 (152)		3 (76)	6 (152)	
Anvil Type	Friction Ring w/ Thru Hole	Thru Hole	Friction Ring	Friction Ring w/ Thru Hole	Friction Ring w/ Thru Hole	Thru Hole
Air Consumption, Free Speed, CFM (SCFM) [L/MIN]	6.7 (48) [190]	6.7 (48) [190]	6.4 (46) [181]	6.4 (46) [181]	6.4 (46) [181]	6.4 (46) [181]
Air Inlet Thread Size	1/2"-14 NPT	1/2"-14 NPT	3/8"-18 NPT	3/8"-18 NPT	3/8"-18 NPT	3/8"-18 NPT
Recommended Hose Size, inches	1/2	1/2	3/8	3/8	3/8	3/8
Vibration Level, m/s ²	8.5	8.5	2.02	2.02	2.02	2.02
Sound Level dBA Pressure	104	104	102	102	102	102
Length, inches (mm)	14 (356)	20 (508)	8 (203)	10 (254)	13 (330)	8 (203)
Weight, lbs. (kg)	15 (6.8)	16 (7.3)	8 (3.6)	9 (4.09)	10 (4.5)	8 (3.6)
Vinyl Boot (included)			MG1200B00T	MG1200B00T	MG1200B00T	MG1200B00T

Impact wrench suffix: P = Pinned anvil, L = Long anvil, XL = Extra long anvil. Standard anvil for applications where frequent socket change is required. Pinned anvil for high-torque applications where socket security is a priority. Long or Extra long anvil for tight applications that require extra reach.



WARNING



- Use only impact sockets and accessories with impact wrenches
- Read safety precautions on pages 594 to 597

1", 3/4" Drive Impact Wrenches—Blue-Point®



AT1300A



6" Long Anvil (L)



AT760



6" Long Anvil (L)

Heavy Duty Air Impact Wrenches

AT1300A Series 1" Drive.

- Workhorse performance for use on trucks, buses and heavy equipment
- Steel nose for rugged, demanding applications
- Pin clutch style impact mechanism for fast startup and high torque requirements
- Thru-hole anvil

Heavy Duty Air Impact Wrenches

AT760 Series 3/4" Drive.

- Lightweight composite housing with aluminum nose
- 3 position thumb operated forward/reverse lever
- Bottom handle exhaust
- Twin hammer mechanism

Heavy Duty

Specifications	AT1300A	AT1300AL	AT760	AT760L
Drive Size, inches (mm)	1 (25)	1 (25)	3/4 (19)	3/4 (19)
Max. Torque, ft. lbs. (N•m)	3,000 (4,068)	2,700 (3,661)	1,100 (1,492)	1,100 (1,492)
Free Speed RPM	4,000	4,000	4,000	4,000
Blows per Minute	505	505	905	905
Extended Anvil Length, inches (mm)		6 (152)		6 (152)
Anvil Type	Friction Ring w/Thru Hole	Friction Ring w/Thru Hole	Friction Ring	Friction Ring
Air Consumption, Free Speed, CFM (SCFM) [L/MIN]	5.3 (38) [150]	5.3 (38) [150]	5.6 (40) [159]	5.6 (40) [159]
Air Inlet Thread Size	1/2"-14 NPT	1/2"-14 NPT	3/8"-18 NPT	3/8"-18 NPT
Recommended Hose Size, inches	1/2	1/2	3/8	3/8
Vibration Level, m/s ²	4.4	4.4	<4.3	<4.3
Sound Level dBa Pressure	103	103	114.4	114.4
Length, inches (mm)	21 (533)	27 (686)	9.5 (241)	14.6 (371)
Weight, lbs. (kg)	25.6 (11.6)	28 (12.7)	8.5 (3.8)	9.8 (4.4)
Vinyl Boot (optional)			AT760B00T	AT760B00T

Impact wrench suffix: L = Long anvil. Standard anvil for applications where frequent socket change is required. Long anvil for tight applications that require extra reach.

1/2" Drive Impact Wrenches



MG725



Pinned Anvil (P)



3" Long Anvil (L)

MG725 Series 1/2" Drive.

- 1 piece machined magnesium is extremely durable and lightweight and provides alignment of internal parts to reduce vibration
- 8 vane rotor provides faster motor startup and greater performance with more torque
- Patented cushion grip helps insulate user's hand from cold and reduces vibration to reduce user fatigue
- Patented tip valve trigger provides increased air flow and greater tool control
- Twin hammer impact mechanism is durable and hard hitting to quickly remove stubborn fasteners
- Sealed-in oil bath lubrication keeps impact mechanism lubricated for less wear
- Slim style nose is ideal for working in restricted access areas
- Anvil stops with release of the trigger to prevent throwing of fasteners
- Cushion grip trigger button delivers improved comfort and control

1/2" Drive Super Duty

Specifications	MG725	MG725L	MG725P
Drive Size, inches (mm)	1/2 (13)	1/2 (13)	1/2 (13)
Max. Torque, ft. lbs. (N•m)	810 (1,098)	810 (1,098)	810 (1,098)
Free Speed RPM	9,800	9,800	9,800
Blows per Minute	1,270	1,270	1,270
Extended Anvil Length, inches (mm)		3 (76)	
Anvil Type	Friction Ring	Friction Ring	Pinned
Air Consumption, Free Speed, CFM (SCFM) [L/MIN]	4.0 (29) [113]	4.0 (29) [113]	4.0 (29) [113]
Air Inlet Thread Size	1/4"-18 NPT	1/4"-18 NPT	1/4"-18 NPT
Recommended Hose Size, inches	3/8	3/8	3/8
Vibration Level, m/s ²	6.6	6.6	6.6
Sound Level dBA Pressure	99.9	99.9	99.9
Length, inches (mm)	7.7 (194)	9.7 (245)	7.7 (194)
Weight, lbs. (kg)	4.8 (2.2)	5.0 (2.3)	4.8 (2.2)
Vinyl Boot (included)	MG725B00T	MG725B00T	MG725B00T

Impact wrench suffix: P = Pinned anvil, L = Long anvil. Standard anvil for applications where frequent socket change is required. Pinned anvil for high-torque applications where socket security is a priority. Long anvil for tight applications that require extra reach.



WARNING



- Use only impact sockets and accessories with impact wrenches
- Read safety precautions on pages 594 to 597

AIR

1/2" Drive Impact Wrenches—Blue-Point®



AT123A

- AT123A 1/2" Drive.**
- Twin hammer impact mechanism provides harder hitting blows
 - Steel nose case with lightweight aluminum housing
 - Pressure feed grease lubrication
 - Convenient slide bar forward/reverse



2" Long Anvil (L)



AT555B

- AT555B 1/2" Drive.**
- Powerful twin hammer clutch
 - Reverse bias motor provides additional breakaway torque
 - Built-in power regulator
 - Molded ergonomic handle improves grip



AT560

- AT560 1/2" Drive.**
- Lightweight composite housing
 - 3 position thumb operated forward/reverse lever
 - Bottom handle exhaust
 - Twin hammer mechanism
 - Contoured aluminum nose



ATC500

- ATC500 1/2" Drive.**
- Aluminum front housing and composite rear housing combine to deliver a durable, lightweight and balanced unit
 - Ribbed, textured handle provides maximum comfort and control
 - 4 position power regulator for greater job versatility
 - Twin hammer impact mechanism for longer life and greater power

Heavy Duty

Specifications	AT123A	AT123AL	AT555B	AT560	ATC500
Drive Size, inches (mm)	1/2 (13)	1/2 (13)	1/2 (13)	1/2 (13)	1/2 (13)
Max. Torque, ft. lbs. (N•m)	425 (576)	425 (576)	475 (644)F, 550 (745) R	520 (705)	525 (712)
Free Speed RPM	9,000	9,000	6,800 (F), 7,500 (R)	7,500	10,500
Blows per Minute	1,000	1,000	1,000	1,205	1,250
Extended Anvil Length, inches (mm)		2 (51)			
Anvil Type	Friction Ring	Friction Ring	Friction Ring	Friction Ring	Friction Ring
Air Consumption, Free Speed, CFM (SCFM) [L/MIN]	2.8 (20) [79]	2.8 (20) [79]	2.2 (16) [62]	3.9 (28) [111]	3.5 (25) [99]
Air Inlet Thread Size	1/4"-18 NPT	1/4"-18 NPT	1/4"-18 NPT	1/4"-18 NPT	1/4"-18 NPT
Recommended Hose Size, inches	3/8	3/8	3/8	3/8	3/8
Vibration Level, m/s ²	13	13	3.75	<6.75	<2.5
Sound Level dBa Pressure	108	108	100	111	95.5
Length, inches (mm)	7.3 (185)	9.3 (236)	7.8 (198)	6.7 (170)	7.8 (198)
Weight, lbs. (kg)	5.8 (2.6)	6.1 (2.8)	5.8 (2.6)	4.6 (2.1)	5 (2.3)
Vinyl Boot (optional)	AT123-45	AT123-45	AT555B00T	AT560B00T	IMC500B00T

Impact wrench suffix: L = Long anvil. Standard anvil for applications where frequent socket change is required. Long anvil for tight applications that require extra reach.

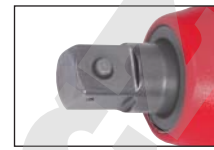
3/8" Drive Impact Wrenches



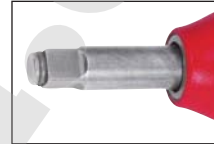
MG325



MG3255



Pinned Anvil (P)



2" Long Anvil (L)



2" Long Pinned Anvil (LP)

MG325 3/8" Drive and MG3255 1/2" Drive

MG325 Features:

- 1 piece magnesium housing for precise internal component alignment to reduce vibration
- Twin hammer impact mechanism delivers hard hitting blows with fewer moving parts to quickly remove stubborn fasteners
- Continuous oil bath lubrication prolongs tool life by reducing premature component wear
- 8 vane motor delivers maximum speed and torque
- Lightweight, balanced design distributes weight evenly to reduce user fatigue
- One handed forward/reverse lever for user convenience
- Cushion grip handle insulates user's hand from cold and absorbs vibration
- Comfort cushion trigger button allows the user to work comfortably with less finger stress
- Anvil stop feature means anvil will stop when trigger is released to avoid throwing fasteners

MG3255 Features:

- Same features as MG325, except for a 1/2" drive anvil
- Compact, yet powerful, 1/2" model is ideal for working in confined areas

MG3255P (Pinned anvil)

- Same features as MG3255, except for a pinned anvil

MG3255L (Long anvil)

- Same features as MG3255, except for a long anvil

MG3255LP (Long pinned anvil)

- Same features as MG3255, except for a long pinned anvil

Super Duty

Specifications	MG325	MG325P	MG3255	MG3255L	MG3255P	MG3255LP
Drive Size, inches (mm)	3/8 (10)	3/8 (10)	1/2 (13)	1/2 (13)	1/2 (13)	1/2 (13)
Max. Torque, ft. lbs. (N•m)	325 (440)	325 (440)	325 (440)	325 (440)	326 (442)	325 (440)
Free Speed RPM	8,200	8,200	8,200	8,200	8,200	8,200
Blows per Minute	1,400	1,400	1,400	1,400	1,400	1,400
Extended Anvil Length, inches (mm)				2 (51)		2 (51)
Anvil Type	Friction Ring	Pinned	Friction Ring	Friction Ring	Pinned	Pinned
Air Consumption, Free Speed, CFM (SCFM) [L/MIN]	2.4 (17) [68]	2.4 (17) [68]	2.4 (17) [68]	2.4 (17) [68]	2.4 (17) [68]	2.4 (17) [68]
Air Inlet Thread Size	1/4"-18 NPT	1/4"-18 NPT	1/4"-18 NPT	1/4"-18 NPT	1/4"-18 NPT	1/4"-18 NPT
Recommended Hose Size, inches	3/8	3/8	3/8	3/8	3/8	3/8
Vibration Level, m/s ²	4.54	4.54	4.54	4.54	4.54	4.54
Sound Level dBa Pressure	96.6	96.6	96.6	96.6	96.6	96.6
Length, inches (mm)	6.1 (155)	6.1 (155)	6.1 (155)	7.6 (193)	6.1 (155)	7.6 (193)
Weight, lbs. (kg)	2.8 (1.3)	2.8 (1.3)	2.8 (1.3)	2.9 (1.3)	2.8 (1.3)	2.9 (1.3)
Vinyl Boot (included)	MG325B00T	MG325B00T	MG325B00T	MG325B00T	MG325B00T	MG325B00T

Impact wrench suffix: P = Pinned anvil, L = Long anvil, LP= Long pinned anvil. Standard anvil for applications where frequent socket change is required. Pinned anvil for high-torque applications where socket security is a priority. Long anvil for tight applications that require extra reach.



WARNING



- Use only impact sockets and accessories with impact wrenches
- Read safety precautions on pages 594 to 597

AIR

3/8", 1/4" Drive Impact Wrenches—Blue-Point®



AT380

AT380 3/8" Drive.

- Twin hammer impact mechanism
- Slim style nose for restricted access applications
- Variable speed trigger for superior control
- Built-in 5 position air regulator



AT321

AT321 3/8" Drive.

- Single hammer impact mechanism
- Steel nose case with lightweight aluminum housing
- Convenient slide bar forward/reverse bar width regulator



AT365

AT365 3/8" Drive.

- Composite housing
- 3 position thumb operated forward/reverse lever
- Twin hammer mechanism
- Contoured aluminum nose



AT351

AT351 3/8" Drive.

- Built-in air inlet swivel
- 8 position power regulator
- Rotary action air motor is ball bearing mounted for balance, speed and power
- Ideal tool for small engine repair and bench work



AT235MCA

AT235MCA 1/4" Drive Micro.

- Fast speed
- Lightweight composite housing with molded comfort grip
- Convenient one handed forward/reverse lever
- Oversized trigger with variable speed

3/8", 1/4" Drive Impact

Specifications	AT380	AT321	AT365	AT351	AT235MCA
Drive Size, inches (mm)	3/8 (10)	3/8 (10)	3/8 (10)	3/8 (10)	1/4 (6)
Max. Torque, ft. lbs. (N•m)	180 (244)	175 (237)	250 (339)	175 (237)	25 (34)
Free Speed RPM	11,000	11,000	9,000	9,700	13,000
Blows per Minute	1,400	1,500	1,250	1,200	2,900
Air Consumption, Free Speed, CFM (SCFM) [L/MIN]	2.7 (19) [76]	3.8 (27) [108]	2.7 (19) [76]	2.5 (18) [71]	1.67 (12) [47]
Air Inlet Thread Size	1/4"-18 NPT	1/4"-18 NPT	1/4"-18 NPT	1/4"-18 NPT	1/4"-18 NPT
Recommended Hose Size, inches	3/8	3/8	3/8	3/8	3/8
Vibration Level, m/s ²	3.5	9.8	6.5	3.09	<2.5
Sound Level dBa Pressure	105	109	107.7	109.2	95.1
Length, inches (mm)	6.3 (160)	6.1 (155)	6.5 (165)	7.6 (194)	6.2 (158)
Weight, lbs. (kg)	2.7 (1.2)	2.9 (1.3)	2.7 (1.2)	2.5 (1.2)	1.4 (.64)
Vinyl Boot (optional)	YA877A	AT321-44	AT365B00T	—	—

3/8", 1/4" Drive Ratchets



FAR72C



FAR25A



FAR7200

FAR72C and FAR7200 3/8" Drive.

- Dual pawls for smooth operation and performance
- Patented "stop lock" pins prevent ratchet pawl lock up
- Steel wear bushings to prevent ratchet head wear
- Comfortable variable speed trigger for added comfort and control
- Zerk fitting in selector knob allows ratchet head lubrication for longer tool life
- Tip valve style trigger provides featherability and versatility
- Patented muffler bypass allows tool to be used in quiet mode or full power (FAR7200 only)
- Cushion grip handle for added comfort and control (FAR7200 only)

FAR25A 1/4" Drive.

- Air motor vanes resist wear, chipping, cracking and moisture
- Needle bearing supported drive shaft provides a smooth running tool
- Ergonomic handle design provides a sure grip and reduces fatigue
- Paddle style variable speed trigger is spring loaded for easy control
- Directional muffler rotates exhaust away from the user
- Lightweight clamshell housing easily accesses restricted areas



FAR2500



FAR2505

FAR2500 1/4" Drive and FAR2505 3/8" Drive Mini Ratchets.

- Balanced, lightweight housing for superior control with less user fatigue
- Soft grip handle increases comfort, reduces vibration and insulates against cold
- Hard coated motor plates help prevent scoring for longer tool life
- Improved rotor vanes provide more power and speed for greater performance in low pressure environments
- Large, lightweight selector knob is easy to turn with greasy hands, easy to reverse direction
- Zerk fitting in selector knob allows ratchet head to be lubricated for longer tool life
- Robust head design for maximum strength and durability
- All ball bearing construction and high strength alloy steel gear system for increased durability

Air Ratchets

Specifications	FAR72C	FAR7200	FAR2505	FAR2500	FAR25A
Drive Size, inches (mm)	3/8 (10)	3/8 (10)	3/8 (10)	1/4 (6)	1/4 (6)
Torque Range, ft.lbs. (N•m)	5 - 65 (6 - 88)	5 - 70 (7 - 97) open mode; 5-50 (7-67) quiet mode	0 - 35 (6 - 47)	0 - 35 (6 - 47)	5 - 25 (6 - 34)
Free Speed RPM	225	260 (open mode); 200 (quiet mode)	235	235	225
Air Consumption, Free Speed, CFM (SCFM) [L/MIN]	2.7 (19) [76]	4.5 (32) [127]	1.4 (10) [40]	1.4 (10) [40]	1.4 (10) [40]
Air Inlet Thread Size	1/4"-18 NPT	1/4"-18 NPT	1/4"-18 NPT	1/4"-18 NPT	1/4"-18 NPT
Recommended Hose Size, inches	3/8	3/8	3/8	3/8	3/8
Vibration Level, m/s²	6.4	6.4	6.2	6.2	6.2
Sound Level dBa Pressure	90	93 (open mode); 87 (quiet mode)	85	85	88
Length, inches (mm)	11.8 (300)	12.1 (308)	7.7 (197)	7.8 (197)	6.7 (171)
Weight, lbs. (kg)	3 (1.3)	3 (1.3)	1.4 (.6)	1.4 (.66)	1.2 (.57)
Vinyl Boot (included)	YA889	YA880	YA905	YA905	YA888



WARNING



- Use only impact sockets and accessories with impact wrenches
- Read safety precautions on pages 594 to 597

AIR

1/2", 3/8", 1/4" Drive Ratchets—Blue-Point®



AT705B

AT705B 1/2" Drive.

- 1/2" drive ratchet in a 3/8" drive body
- Ball bearing mounted motor for longer tool life



AT704

AT704 3/8" Drive.

- Lightweight aluminum housing
- Rugged ball bearing mounted air motor and precision planetary gear system
- Easy to use variable speed throttle plus adjustable air regulator



AT700F

AT700F 3/8" Drive.

- Lightweight aluminum housing
- Rugged ball bearing mounted air motor and precision planetary gear system
- Easy to use variable speed throttle plus adjustable air regulator



AT702

AT702 3/8" Drive High Torque.

- Flywheel mechanism
- Rugged ball bearing mounted air motor coupled with precision planetary gear system
- Easy to use variable speed throttle and adjustable air regulator



AT738

AT738 3/8" Drive.

- Reactionless mechanism absorbs kickback when running fasteners tight
- High RPM removes fasteners quickly
- Adjustable air regulator
- Ideal tool for spark plugs, water pumps, shocks and muffler clamps



AT203

AT203 1/4" Drive.

- Lightweight aluminum housing
- Rugged ball bearing mounted air motor and precision planetary gear system
- Easy to use variable speed throttle plus adjustable air regulator



AT200D

AT200D 1/4" Drive.

- Lightweight aluminum housing
- Rugged ball bearing mounted air motor and precision planetary gear system



AT204

AT204 1/4" Drive Mini.

- Ideal for working in tight quarters
- Head clearance is less than 3/4"
- Includes variable speed trigger, adjustable air regulator and 5 nylon braided whip hose for maneuverability and control
- Polished aluminum housing provides strength and durability

Air Ratchets

Specifications	AT705B	AT704	AT700F	AT702	AT738	AT203	AT200D	AT204
Drive Size, inches (mm)	1/2 (13)	3/8 (10)	3/8 (10)	3/8 (10)	3/8 (10)	1/4 (6)	1/4 (6)	1/4 (6)
Torque Range, ft.lbs. (N•m)	5 - 50 (6 - 68)	5 - 55 (6 - 75)	5 - 45 (6 - 61)	5 - 60 (6 - 81)	0 - 60 (0 - 81)	5 - 25 (6 - 34)	5 - 20 (6 - 27)	5 - 22 (6 - 30)
Free Speed RPM	150	200	150	200	300	285	150	275
Air Consumption, Free Speed, CFM (SCFM) [L/MIN]	3.0 (22) [85]	3.9 (28) [111]	3.0 (22) [85]	3.0 (22) [85]	4.0 (29) [113]	3.1 (22) [88]	1.4 (10) [40]	2.4 (17) [68]
Air Inlet Thread Size	1/4"-18 NPT	1/4"-18 NPT	1/4"-18 NPT	1/4"-18 NPT	1/4"-18 NPT	1/4"-18 NPT	1/4"-18 NPT	1/4"-18 NPT
Recommended Hose Size, inches	3/8	3/8	3/8	3/8	3/8	3/8	3/8	3/8
Vibration Level, m/s ²	8.7	<3.9	8.7	12.6	5.9	<4.4	3.3	<1.7
Sound Level dBa Pressure	89	104	89	95	102	100	85	91
Length, inches (mm)	10.7 (273)	10.5 (266)	10.1 (257)	10.4 (265)	11.2 (285)	7.4 (188)	8.7 (222)	4.9 (127)
Weight, lbs. (kg)	2.5 (1.14)	3.3 (1.5)	3.5 (1.6)	2.4 (1.1)	3 (1.3)	1.2 (.57)	1.1 (.50)	1.4 (.66)
Vinyl Boot (included)	AT700E49A	—	AT700E49A	AT700E49A	AT738B00T	—	AT200D22A	—

1/2", 3/8" Drive Drills



PDR5000A



PDR3000A

PDR5000A and PDR3000A 1/2 and 3/8 Reversible.

- Top mounted forward/reverse switch allows 1 hand operation, means more convenience for user
- 5 vane air motor provides more drilling power to get the job done faster
- Over-molded cushion handle insulates from cold and vibration to reduce user fatigue
- Reversible variable speed trigger for more control of drilling speed allows precise drilling and increased safety
- Internal ball bearing construction for smooth operation and extended tool life
- 3 planet industrial strength gear train provides durability for heavy duty drilling applications
- Precise .0025" chuck runout enables precision drilling and yields a high quality job
- Ergonomically designed lightweight aluminum housing provides a high power to weight ratio, allowing more productivity with less fatigue

1/2" and 3/8" Capacity Drills

Specifications	PDR5000A	PDR3000A
Chuck Size, inches (mm)	1/2 (13)	3/8 (10)
Rated Power, hp (kW)	0.45 (.33)	0.45 (.33)
Torque Range, in.lbs. (N•m)	0 - 300 (0 - 34)	0 - 50 (0 - 6)
Free Speed RPM	450	2500
Spindle Thread, inches	1/2-20 UNF	3/8-24 UNF
Air Consumption, Free Speed, CFM (SCFM) [L/MIN]	3.8 (27) [108]	3.5 (25) [99]
Air Inlet Thread Size	1/4"-18 NPT	1/4"-18 NPT
Recommended Hose Size, inches	3/8	3/8
Vibration Level, m/s ²	<2.5	<2.5
Sound Level dBa Pressure	80	80
Length, inches (mm)	8.7 (222)	7 (178)
Weight, lbs. (kg)	3 (1.3)	2.5 (1.1)
Auxiliary Handle	PDR5000-40A	
Keyless Chuck (optional)		PDR3A-2



AT184

AT184 Spotweld Drill.

- Twist depth control collar allows precise setting of drilling depth up to 1/4"
- 2 speed trigger for low or high speeds
- Includes (1) 5/16" (8 mm) drill bit and removeable clamp arm

Spotweld Drill

Specifications	AT184
Chuck Size, inches (mm)	5/16 (8)
Rated Power, hp (kW)	
Torque Range, in.lbs. (N•m)	
Free Speed RPM	1,800
Air Consumption, Free Speed, CFM (SCFM) [L/MIN]	8.4 (60) [238]
Air Inlet Thread Size	1/4"-18 NPT
Recommended Hose Size, inches	3/8
Vibration Level, m/s ²	<1.0
Sound Level dBa Pressure	84
Length, inches (mm)	7.9 (201)
Weight, lbs. (kg)	3.1 (1.4)
Spotweld Drill Bit (8mm) (included)	AT183-50
Spotweld Drill Bit (6.5mm) (optional)	AT183-43
Spotweld Drill Bit (10mm) (optional)	AT183-51
Support Arm 5.5 (optional)	AT184-26A



WARNING

• Read safety precautions on pages 594 to 597

AIR

1/2", 3/8", 1/4" Drills—Blue-Point®



AT5000

AT5000 1/2" Reversible.

- Chuck key conveniently stores in handle
- Variable speed trigger
- Convenient, 1 hand forward/reverse operation
- Bottom handle exhaust directs exhaust away from the work



AT3000

AT3000 3/8" Reversible.

- 1 hand forward/reverse operation
- Bottom handle diffused exhaust
- Comfort grip handle
- Keyless chuck



AT811

AT811 3/8" Angle.

- Convenient 1 hand pushbutton forward/reverse
- Rear exhaust keeps air away from the work area
- Built-in chuck key holder keeps the key at hand for quick bit changes
- Ball bearing construction for longer tool life



AT801MCA

AT801MCA 1/4" Micro.

- Small size ideal for working in confined areas
- Durable composite housing stands up to rugged use
- Reverse lever conveniently positioned for 1 hand operation
- Oversize variable speed trigger

1/4", 3/8" and 1/2" Capacity Drills

Specifications	AT5000	AT3000	AT811	AT801MCA
Chuck Size, inches (mm)	1/2 (13)	3/8 (10)	3/8 (10)	1/4 (6)
Rated Power, hp (kW)	0.45 (.33)	0.2 (.15)	0.25 (.19)	0.25 (.19)
Torque Range, in.lbs. (N•m)	0 - 120 (0 - 14)	0 - 35 (0 - 4)	0 - 55 (0 - 6)	0 - 18 (0 - 2)
Free Speed RPM	490	2,000	1,320	1,800
Spindle Thread, inches	1/2-20 UNF	3/8-24 UNF	3/8-24 UNF	3/8-24 UNF
Air Consumption, Free Speed, CFM (SCFM) [L/MIN]	3.8 (27) [108]	3.5 (25) [99]	3.4 (24) [95]	9.4 (68) [266]
Air Inlet Thread Size	1/4"-18 NPT	1/4"-18 NPT	1/4"-18 NPT	1/4"-18 NPT
Recommended Hose Size, inches	3/8	3/8	3/8	3/8
Vibration Level, m/s ²	<2.5	<2.5	<.8	<2.5
Sound Level dBa Pressure	82	105	110	96.4
Length, inches (mm)	9 (229)	7.6 (194)	8.2 (208)	7.2 (183)
Weight, lbs. (kg)	3.8 (1.7)	3.2 (1.4)	2.5 (1.1)	1.5 (.68)
Auxiliary Handle	PDAH1A			
Vinyl Boot (optional)	AT5000B00T	AT3000B00T		



PH3050A



PHG3050CH4A



AT2050

PH3050A Super Duty.

- Dual elastomer cushions absorb shock and vibration to reduce user fatigue
- Phenolic (Kevlar® reinforced) flutter disc provides long life
- Direct multi-port front exhaust keeps air and debris away from user
- High grade steel barrel provides greater strength
- Variable speed soft touch trigger provides featherability for greater control
- 4 position built in air regulator varies power for different applications
- Air line screen helps prevent foreign particles from clogging trigger mechanism
- Hardened steel piston delivers harder blows for maximum impact

AT2050 Heavy DutyBlu e-Point®.

- Variable speed trigger with built-in speed regulator
- Quick change chuck makes bit changing easy
- Comfort grip handle for less user fatigue
- Hard hitting to get the job done quicker



PH200D

PHG3050CH4A Set

Includes:

PH3050A	Heavy Duty Air Hammer	PHG59A	Taper Punch, 3/16" tip
PH200D	Retainer Chuck	PHG87A	Muffler Cutter, 17/32" wide
PHG55A	Flat Chisel, 3/4" wide	PB1D	Storage Box
PHG57A	Double Blade Panel Cutter, 3/4" wide		

PH200D Universal Quick Change Chuck Retainer.

- Use for fast and easy insertion/removal of air hammer bits
- Non-turning insert design reduces wear for longer tool life
- Constructed from high grade steel; insert is constructed from durable polyurethane elastomer
- Universal design fits most air hammers
- Knurled chrome collar ensures a sure gripping surface, even with greasy hands

Super and Heavy Duty

Specifications	PH3050A	AT2050
Bore Diameter, inches (mm)	3/4 (19)	3/4 (19)
Blows per Minute	2,500	3,400
Piston Stroke, inches	3	2.75
Shank Opening, inches (mm)	0.401 (10.1)	0.401 (10.1)
Air Consumption, Free Speed, CFM (SCFM) [L/MIN]	1.8 (13) [51]	2.5 (18) [71]
Air Inlet Thread Size	1/4"-18 NPT	1/4"-18 NPT
Recommended Hose Size, inches	5/16	5/16
Vibration Level, m/s ²	1.5	3.0
Vibration Level	1.5 m/s ²	3 m/s ²
Sound Level dBa Pressure	94	99
Length, inches (mm)	8.9 (227)	7.4 (187)
Weight, lbs. (kg)	5.9 (2.7)	4.6 (2.1)
Vinyl Boot (optional)	PH3050B00T	AT2050B00T



WARNING



- Use air hammer accessories only for intended purpose
- Read safety precautions on pages 594 to 597

Die Grinders

PT Series

- Ergonomic handle is contoured to fit comfortably in the hand as well as absorb vibration
- Adjustable rear exhaust outlet allows adjustment of exhaust away from the work area while keeping material removal away from operator's face
- Thermally balanced air motor acts as internal cooling system to protect moving parts, efficiently routing air to control surface temperature of tool
- Built in 10 position power/speed regulator precisely matches tool speed to job requirements
- Easy bit changing using standard wrenches
- Safety style variable speed paddle trigger helps prevent accidental starting of tool
- Low dBA rating reduces fatigue from noise



PT100

PT100 Mini



PT110

PT110 Mini Right Angle



PT200R

PT200R Standard



PT210R

PT210R Right Angle



PT200LR

PT200LR Extended

Straight and Angle Head - 1/4" Collet

Specifications	PT100	PT110	PT200R	PT210R	PT200LR
Collet Size, inches	1/4	1/4	1/4	1/4	1/4
Rated Power, hp (kW)	0.3 (.2)	0.3 (.2)	0.5 (.3)	0.5 (.3)	0.5 (.3)
Free Speed RPM	25,000	25,000	22,000	22,000	22,000
Air Consumption, Free Speed, CFM (SCFM) [L/MIN]	1.4 (10) [40]	1.4 (10) [40]	2.7 (19) [76]	3 (22) [85]	1.4 (10) [40]
Air Inlet Thread Size	1/4"-18 NPT	1/4"-18 NPT	1/4"-18 NPT	1/4"-18 NPT	1/4"-18 NPT
Recommended Hose Size, inches	3/8	3/8	3/8	3/8	3/8
Vibration Level, m/s ²	3.8	3.8	3.8	<2.5	2.6
Sound Level dBa Pressure	84	84	84	84	84
Length, inches (mm)	5.8 (149)	5.6 (144)	6.7 (170)	6.6 (168)	10.6 (269)
Weight, lbs. (kg)	1.6 (.73)	1.9 (.86)	1.8 (.83)	2.0 (.93)	2.0 (.91)

Die Grinders—Blue-Point®



AT115



AT118



AT105



AT109

AT115 Standard.

- Comfort grip insulates from cold and vibration
- Brass bezel and air inlet provide durability and long life
- High quality bearings improve productivity with less repair
- Rear exhaust directs air away from work area

AT118 Right Angle Mini.

- Comfort grip insulates from cold and vibration
- Small size fits in palm
- High quality bearings improve productivity with less repair
- Rear exhaust directs air away from work area

AT105 Standard.

- Aluminum housing for long lasting durability
- Intended for most standard deburring operations
- High quality bearings improve productivity with less repair
- Rear exhaust directs air away from work area

AT109 Right Angle Mini.

- Aluminum housing for long lasting durability
- Compact mini design with 90° head for easy access
- High quality bearings improve productivity with less repair
- Rear exhaust directs air away from work area

Straight and Angle Head - 1/4" Collet

Specifications	AT115	AT118	AT105	AT109*
Collet Size, inches	1/4	1/4	1/4	1/4
Rated Power, hp (kW)	0.2 (.15)	0.2 (.15)	0.2 (.15)	0.2 (.15)
Free Speed RPM	22,000	20,000	22,000	20,000
Air Consumption, Free Speed, CFM (SCFM) [L/MIN]	4 (29) [113]	2.1 (15) [59]	4 (29) [113]	2.1 (15) [59]
Air Inlet Thread Size	1/4"-18 NPT	1/4"-18 NPT	1/4"-18 NPT	1/4"-18 NPT
Recommended Hose Size, inches	3/8	3/8	3/8	3/8
Vibration Level, m/s ²	<2.5	2.5	<2.5	2.5
Sound Level dBa Pressure	102	104	102	104
Length, inches (mm)	6.5 (165)	5.5 (140)	6.5 (165)	5.5 (140)
Weight, lbs. (kg)	1.3 (.61)	1.1 (.50)	1.3 (.61)	1.1 (.50)

* See p. 280 for AT109DGK die grinder kit specifications.



AT1070A

AT1070A Pencil.

- Twist-action variable speed control
- 5' (1.5 M) long protected air hose
- Used with 1/8" shank grinding accessories rated a minimum of 75,000 RPM
- Ideal for tight spaces and easy cleaning of dies, rotors and brake pads



AT1070RA

AT1070RA Pencil.

- Same as AT1070A except features right angle head

Pencil Die Grinders

Specifications	AT1070A	AT1070RA
Collet Size, inches	1/8	1/8
Rated Power, hp (kW)		
Free Speed RPM	75,000	75,000
Air Consumption, Free Speed, CFM (SCFM) [L/MIN]	1 (7) [28]	1 (7) [28]
Air Inlet Thread Size	1/4"-18 NPT	1/4"-18 NPT
Recommended Hose Size, inches	3/8	3/8
Vibration Level, m/s ²	2.0	2.0
Sound Level dBa Pressure	72	72
Length, inches (mm)	5.3 (135)	5.9 (150)
Weight, lbs. (kg)	.55 (.25)	.46 (.21)



WARNING



- Do not use grinder accessories above their maximum rated RPM
- Read safety precautions on pages 594 to 597

Cutting Tools



PT250R

PT250R 3" Cut Off Tool.

- Adjustable cutting wheel guard rotates to any safe and convenient position
- Adjustable rear exhaust keeps exhaust away from the work area
- Thermally balanced air motor acts as internal cooling system to protect moving parts and efficiently routes air to control surface temperature of tool, reducing motor vibration and collecting runout
- 10 position power/speed regulator precisely matches tool speed to job requirements



AT154R

AT154R 4" Reversible Cut Off Tool.

- 14.8" overall length provides extended reach for easier access
- Reverse mode controls the direction of sparks for safety
- Exhaust diffused through the rear of tool away from work surface
- Side handle provides additional tool control



AT157R

AT157R 3" Reversible Cut Off Tool.

- Reversible to change direction of sparks
- Built in speed regulator for fine tuning
- Side handle provides additional tool control
- Extended reach for hard to access areas

Cut Off Tools

Specifications	PT250R	Blue-Point®/Reversible	
		AT154R	AT157R
Wheel Size, inches (mm)	3 (76)	4 (101.5)	3 (76)
Rated Power, hp (kW)	0.5 (.37)	0.9 (.67)	0.45 (.33)
Free Speed RPM	22,000	16,000	20,000
Air Consumption, Free Speed, CFM (SCFM) [L/MIN]	2.7 (19) [76]	3.6 (26) [102]	3.5 (25) [99]
Air Inlet Thread Size	1/4"-18 NPT	1/4"-18 NPT	1/4"-18 NPT
Recommended Hose Size, inches	3/8	3/8	3/8
Vibration Level, m/s ²	<2.5	<.6	<3.8
Sound Level dBa Pressure	84	104	100
Length, inches (mm)	7.2 (183)	14.8 (376)	7.3 (185)
Weight, lbs. (kg)	1.2 (.55)	3.1 (1.4)	1.9 (.86)
3" Cutter Wheels (36 grit) (optional)	AT150-20A		AT150-20A
3" Cutter Wheels (54 grit) (optional)	AT150-29A		AT150-29A
4" Cutter Wheels		AT154RWHLMF	

Grinders—Blue-Point®



AT215

AT215 2" Angle Grinder.

- (6) 2" wheels
- Moveable guard, up to 50° in either direction, fits various applications
- Built-in speed regulator allows user to set desired speed, providing more control
- Rear exhaust with rotating deflector directs air away from work area with no resulting blow-back at user
- Safety lever throttle prevents accidental startups for increased safety



AT415B

AT415B 4 1/2" Compact Grinder.

- Includes 1 grinding disc.

Grinders

Specifications	AT215	AT415B
Wheel Size, inches (mm)	2 (51)	4 1/2 (114)
Rated Power, hp (kW)	0.5 (.37)	0.86 (.64)
Free Speed RPM	15,000	12,000
Air Consumption, Free Speed, CFM (SCFM) [L/MIN]	3 (22) [85]	3.2 (23) [91]
Air Inlet Thread Size	1/4"-18 NPT	1/4"-18 NPT
Recommended Hose Size, inches	3/8	3/8
Vibration Level, m/s ²	<2.86	5.1
Sound Level dBa Pressure	73	87
Length, inches (mm)	7.4 (188)	10 (254)
Weight, lbs. (kg)	1.8 (.82)	4.2 (1.9)
Grinding Discs	AT215GWSET (opt.)	AT415A51



AT192A

AT192A High Speed Reciprocating Saw.

- Adjustable blade guard to control cutting depth
- Teflon® coated piston for smooth operation and durability
- Comfort grip handle with safety lever throttle
- Includes bi-metal blades: (1) 18PTI, (1) 24TPI, (1) 32TPI



AT194A

AT194A Micro Air Saw.

- Compact size for easy access in tight quarters
- Guarded hose extension helps prevent damage to finished surfaces
- Performs straight or scroll cuts in metal and plastic
- Includes bi-metal blades: (1) 18PTI, (1) 24TPI, (1) 32TPI

Air Saws

Specifications	AT192A	AT194A
Free Speed RPM	11,000	8,250
Air Consumption, Free Speed, CFM (SCFM) [L/MIN]	1 (7) [28]	.70 (5) [20]
Air Inlet Thread Size	1/4"-18 NPT	1/4"-18 NPT
Recommended Hose Size, inches	3/8	3/8
Vibration Level, m/s ²	10.1	<6.6
Sound Level dBa Pressure	94	87
Length, inches (mm)	9.3 (235)	6.7 (175)
Weight, lbs. (kg)	1.7 (.80)	1 (.45)
Replacement Blades		
Bi-Metal Blade, 18TPI, 3 3/4" long (qty. 5)	AT190-39A	AT190-39A
Bi-Metal Blade, 24TPI, 3 3/4" long (qty. 5)	AT190-40A	AT190-40A
Bi-Metal Blade, 32TPI, 3 3/4" long (qty. 5)	AT190-41A	AT190-41A



AT185

AT185 Dual Punch Tool.

- Use to make 3/16" and 5/16" punches in light sheet metal
- Head swivels 360° for maximum versatility

Specifications	AT185
Free Speed RPM	
Air Consumption, Free Speed, CFM (SCFM) [L/MIN]	11.3 (81) [320]
Air Inlet Thread Size	1/4"-18 NPT
Recommended Hose Size, inches	3/8
Vibration Level, m/s ²	<2.5
Sound Level dBa Pressure	48.6
Length, inches (mm)	9.3 (235)
Weight, lbs. (kg)	2.6 (1.2)



AT195

AT195 Powered Shears.

- Trims, outlines and shears
- Replaceable brass filter screen
- Built in speed regulator

Specifications	AT195
Free Speed RPM	
Air Consumption, Free Speed, CFM (SCFM) [L/MIN]	4 (29) [113]
Air Inlet Thread Size	1/4"-18 NPT
Recommended Hose Size, inches	3/8
Vibration Level, m/s ²	<2.5
Sound Level dBa Pressure	99.6
Length, inches (mm)	10 (254)
Weight, lbs. (kg)	2.8 (1.3)

AT180C Nibbler.

- Cuts mild steel sheet up to 16 gauge (0.62") (1.55mm)
- Anvil is adjustable for forward, backward and left or right cutting
- Readily cuts most non-ferrous materials including aluminum, brass, formica, laminates, fiberglass and masonite

Specifications	AT180C
Free Speed RPM	3,500
Air Consumption, Free Speed, CFM (SCFM) [L/MIN]	4 (29) [113]
Air Inlet Thread Size	1/4"-18 NPT
Recommended Hose Size, inches	3/8
Vibration Level, m/s ²	4.3
Sound Level dBa Pressure	97
Length, inches (mm)	7.6 (194)
Weight, lbs. (kg)	1.9 (.88)



AT180C



WARNING

- Do not operate without the guard
- Do not use grinding discs or accessories above their maximum rated RPM
- Read safety precautions on pages 594 to 597

Sanders



PS4512



PS4612



PSF4612

PS4512/PS4612/PSF4612 Orbital Sanders.

- Delivers 12,000 RPM with unsurpassed control and comfort
- Soft, ergonomic adjustable grip is indexable and can be rotated to fit the user's hand
- Patented O-ring sealed motor extends tool life by preventing dust and debris from entering mechanical components
- S-shaped paddle lever to better fit the curve of the user's hand to provide comfort and resist fatigue
- Internal notches on inside of grip provide additional comfort and prevent grip from rotating after initial positioning
- Multi-position regulator controls maximum speed for versatility
- Robust front spindle and precision balanced crank extend motor life and provide smoother operation with minimal vibration
- Patented bearing dust shield extends motor life by preventing contamination of lower motor bearings
- Composite over-molded housing is lightweight and easy to maneuver
- Non-Vacuum PSA pad included
- Optional PSV4612KIT vacuum kit is also available



PSF4312



PS4609



PS4809

PSF4312 3" Orbital Sander.

- Same features as PS4612 except:
- 3" lightweight, 30 gram pad is flexible for spot sanding and feather edging, providing more control of the application

PS4609 6" and PS4809 8" Geared Sanders.

- Removal and leveling of large amounts of filler materials such as glue or epoxy
- Leveling small welds
- Removing coatings prior to painting
- For use on metal, solid surfaces, wood and fiberglass
- Super ergonomic adjustable grip is indexable to multiple positions for optimum comfort
- Made of soft material for maximum vibration absorption
- PS4609V (VAC) model
- PS4809V (VAC) model

Orbital and Geared Sanders

Specifications	PS4512	PS4612	PSF4612	PSF4312	PS4609	PS4609V	PS4809	PS4809V
Pad Size, inches (mm)	5 (127)	6 (152)	6 (152)	3 (76)	6 (152)	6 (152)	8 (203)	8 (203)
Rated Power, hp (kW)	0.25 (.19)	0.25 (.19)	0.25 (.19)	0.25 (.19)	0.42 (.33)	0.42 (.33)	0.42 (.33)	0.42 (.33)
Free Speed RPM	12,000	12,000	12,000	12,000	1,000	1,000	1,000	1,000
Spindle Thread, inches	5/16-24	5/16-24	5/16-24	1/4-20	3/8	1/4	3/8	3/8
Air Consumption, Free Speed, CFM (SCFM) [L/MIN]	2 (14) [57]	2 (14) [57]	2 (14) [57]	2 (14) [57]	3 (21.7) [85]	3 (21.7) [85]	3 (21.7) [85]	3 (21.7) [85]
Air Inlet Thread Size	1/4"-18 NPT	1/4"-18 NPT	1/4"-18 NPT	1/4"-18 NPT	1/4"-18 NPT	1/4"-18 NPT	1/4"-18 NPT	1/4"-18 NPT
Recommended Hose Size, inches	3/8	3/8	3/8	3/8	3/8	3/8	3/8	3/8
Vibration Level, m/s ²	2.3	2.3	2.1	2.1	5.9	5.9	5.9	5.9
Sound Level dBa Pressure	77	81	81	76	82	82	82	82
Length, inches (mm)	5 (127)	6 (152)	6 (152)	3 (76)	11 (281)	11 (281)	11 (281)	11 (281)
Weight, lbs. (kg)	1.7 (.77)	2.5 (1.14)	2.4 (1.11)	1.4 (.65)	3.7 (1.70)	3.7 (1.70)	4 (1.82)	4 (1.82)
Standard Pad	PS4512-1AH	PS4612-1AH	PS4612-1AH	PS4312-2H	PS468-34	PS468-34V	PS468-35	PS468-35V

Sanders—Blue-Point®



AT408

AT408 8" Dual Action Sander.

- Rear diffused exhaust
- Built-in adjustable speed regulator
- Removable brass filter screens out debris



AT411A

AT411A 6" Dual Action Sander.

- For fine sanding operations and swirl free finishing
- Comfort handle helps reduce fatigue
- Converts from rotary to random orbit action by sliding drive plate
- Built-in thumb wheel speed regulator



AT465B

AT465B 5" Compact Angle Sander.

- Built-in adjustable speed regulator
- Rear diffused exhaust
- Side mount auxiliary handle
- Safety throttle lever



AT450B

AT450B 7" Heavy Duty Angle Sander.

- Built-in adjustable speed regulator
- Recommended for sanding and finishing
- Conventional rear exhaust
- Safety throttle lever



AT460B

AT460B 5" Heavy Duty Vertical Angle Sander.

- Built-in adjustable speed regulator
- Recommended for sanding and finishing
- Side mount auxiliary handle
- Lightweight aluminum housing

Dual Action and Angle Sanders—Blue-Point

Specifications	AT408	AT411A	AT465B	AT450B	AT460B
Pad Size, inches (mm)	8 (203)	6 (152)	5 (127)	7 (177)	7 (177)
Rated Power, hp (kW)	0.5 (.37)	0.5 (.37)	0.8 (.59)	1 (.74)	0.67 (.49)
Free Speed RPM	850	10,000	6,100	5,100	4,500
Spindle Thread, inches	5/16-24	5/16-18	5/16-11	5/16-11	5/16-11
Air Consumption, Free Speed, CFM (SCFM) [L/MIN]	5 (36) [142]	5 (36) [142]	4.8 (34) [136]	4.8 (34) [136]	4.8 (34) [136]
Air Inlet Thread Size	1/4"-18 NPT	1/4"-18 NPT	1/4"-18 NPT	1/4"-18 NPT	1/4"-18 NPT
Recommended Hose Size, inches	3/8	3/8	3/8	3/8	3/8
Vibration Level, m/s ²	3.7	3.7	<2.5	5.6	<2.5
Sound Level dBA Pressure	87	79	84	84	83
Length, inches (mm)	11 (281)	8 (203)	9.7 (248)	15.7 (400)	7.3 (185)
Weight, lbs. (kg)	4.8 (2.18)	4.7 (2.14)	2.9 (1.32)	5.5 (2.50)	5 (2.27)
Standard Pad	AT408-2	AT411A-1	AT465-20H	AT450-46H	AT450-46H

Reversible Disc Sanders—Blue-Point

Specifications	AT425R
Pad Size, inches (mm)	5 (127)
Rated Power, hp (kW)	0.45 (.33)
Free Speed RPM	13,000
Spindle Thread, inches	7/16-20
Air Consumption, Free Speed, CFM (SCFM) [L/MIN]	4.3 (31) [122]
Air Inlet Thread Size	1/4"-18 NPT
Recommended Hose Size, inches	3/8
Vibration Level, m/s ²	<0.8
Sound Level dBA Pressure	93
Length, inches (mm)	5.3 (135)
Weight, lbs. (kg)	2.8 (1.28)
Standard Pad	AT425R-24
3" Replacement Pad (opt.)	AT425R-22
4" Replacement Pad (opt.)	AT425R-23



AT425R

AT425R 5" Reversible Hi-speed Sander.

- Comfort grip handle
- 1 hand forward/reverse lever
- Built-in speed regulator
- Includes 3 backing discs: 3", 4", 5"



WARNING

- Do not use sanding discs or accessories above maximum rated RPM
- Read safety precautions on pages 594 to 597

Finishing Tools



AT109DGK

AT109DGK Die Grinder Kit.

- Aluminum housing
- Compact mini design
- Rear exhaust

Includes: AT109 mini angle die grinder plus 2" (50.8mm) ROLOC® pad (1 ea.), 2" (50.8mm) coarse discs (2 ea.), 2" (50.8mm) medium discs (2 ea.), 2" (50.8mm) 24 grit discs (2 ea.), 2" (50.8mm) 36 grit discs (2 ea.), 2" (50.8mm) crud discs (2 ea.), 3" (76.2mm) ROLOC pad (1 ea.), 3" (76.2mm) 50 grit discs (2 ea.), 3" (76.2mm) 120 grit discs (2 ea.), 3" (76.2mm) crud discs (2 ea.), 1/4" shank adaptor (1 ea.) and spanner wrenches (2 ea.) in storage case.



AT119DGK

AT119DGK Die Grinder Kit.

- Thread-on style disc provides a more compact head than collet style units
- 115° offset head provides a more ergonomic grinding position
- Ideal for cleaning dies, rotors, backing plates and gasket material

Includes: 115° Mini Offset Angle Die Grinder plus: 2" (50.8mm) ROLOC pad (1 ea.), 2" (50.8mm) coarse discs (2 ea.), 2" (50.8mm) medium discs (2 ea.), 2" (50.8mm) 24 grit discs (2 ea.), 2" (50.8mm) 36 grit discs (2 ea.), 2" (50.8mm) crud discs (2 ea.), 3" (76.2mm) ROLOC pad (1 ea.), 3" (76.2mm) coarse discs (2 ea.), 3" (76.2mm) medium discs (2 ea.), 3" (76.2mm) 50 grit discs (2 ea.), 3" (76.2mm) 120 grit discs (2 ea.), 3" (76.2mm) crud discs (2 ea.), and spanner wrench (1 ea.) in storage case.

Specifications	AT109DGK	AT119DGK
Rated Power, hp (kW)	0.2 (.15)	0.45 (.33)
Free Speed RPM	20,000	2,000
Air Consumption, Free Speed, CFM (SCFM) [L/MIN]	2.1 (15) [59]	2.1 (15) [59]
Air Inlet Thread Size	1/4"-18 NPT	1/4"-18 NPT
Recommended Hose Size, inches	3/8	3/8
Vibration Level, m/s ²	2.5	<6.92
Sound Level dBa Pressure	104	100
Length, inches (mm)	5.5 (140)	6.81 (173)
Weight, lbs. (kg)	1.1 (50)	1.1 (50)



AT475A

AT475A Heavy Duty In Line Sander.

- 5/8" stroke
- Minimal vibration
- For fast material removal
- Pad has positive locking clamps



AT435A

AT435A Jitterbug Sander.

- Features top mounted throttle
- For fast material removal
- Built-in speed regulator
- Pad has positive locking clamps

In-Line and Jitterbug Sanders

Specifications	AT475A	AT435A
Rated Power, hp (kW)		0.5 (.37)
Free Speed RPM	1,800	8,000
Air Consumption, Free Speed, CFM (SCFM) [L/MIN]	2.3 (17) [65]	3 (22) [85]
Air Inlet Thread Size	1/4"-18 NPT	1/4"-18 NPT
Recommended Hose Size, inches	3/8	3/8
Vibration Level, m/s ²	14.9	4.5
Sound Level dBa Pressure	87	84
Length, inches (mm)	16 (406)	6.7 (171)
Weight, lbs. (kg)	6.8 (3.09)	4.6 (2.09)
Standard Pad	AT475A-29	AT435A-48

Finishing Tools—Blue-Point®



AT401MCA



AT402MCA



AT403MCA

AT401MCA, AT402MCA and AT403MCA Micro Series Features.

- Powerful direct drive gear train for greater durability
- Larger 2 finger trigger for better control
- High quality bearings for longer tool life
- Composite housing with comfort grip insulates from cold
- Bottom handle diffused exhaust
- Variable speed trigger

Specifications	AT401MCA	AT402MCA	AT403MCA
Pad Size, inches (mm)	3 (76)	3 (76)	3 (76)
Rated Power, hp (kW)	0.25 (.19)	0.25 (.19)	0.25 (.19)
Free Speed RPM	15,000	15,000	6,000
Spindle Thread, inches	1/4"-20	5/16"-24	5/16"-24
Air Consumption, Free Speed, CFM (SCFM) [L/MIN]	2.1 (15) [59]	2.1 (15) [59]	2.2 (16) [62]
Air Inlet Thread Size	1/4"-18 NPT	1/4"-18 NPT	1/4"-18 NPT
Recommended Hose Size, inches	3/8	3/8	3/8
Vibration Level, m/s ²	<2.5	<2.5	<2.5
Sound Level dBa Pressure	84	84	86
Length, inches (mm)	4.7 (119)	5.2 (133)	5.6 (143)
Weight, lbs. (kg)	.97 (.44)	1.1 (.50)	1.3 (.60)



AT401MCKA

AT401MCKA Micro Dual Action Sander Kit.

- Includes: AT401MCA micro surface prep tool, (1) 2" ROLOC® pad, (1) 3" ROLOC pad, (5) 2" 40 grit pads and (5) 3" 80 grit pads in storage case



AT402MCKA

AT402MCKA Micro Dual Action Sander Kit.

- Includes: AT402MC micro sander, (1) 3" Hook-It® pad, (25) 3" 180-grit pads, (25) 3" 200 grit pads, (10) 3" 320 grit pads and (10) 3" 800 grit pads in storage case



AT403MCKA

AT403MCKA Micro Polisher Kit.

- Includes: AT403MCA micro polisher, (1) 3" Hook-It pad, (1) 3" wool pad, and (1) 3" foam pad in storage case



AT460BP

AT450BP

AT460BP Heavy Duty Angle Polisher.

- Removeable side handle
- Includes wool pad

AT450BP Heavy Duty Vertical Polisher.

- Removeable side handle
- Includes wool pad

Polishers

Specifications	AT450BP	AT460BP
Pad Size, inches (mm)	7 (177)	7 (177)
Rated Power, hp (kW)	1 (.74)	0.67 (.49)
Free Speed RPM	5,100	4,500
Spindle Thread, inches	5/8"-11	5/8"-11
Air Consumption, Free Speed, CFM (SCFM) [L/MIN]	4.8 (34) [136]	4.8 (34) [136]
Air Inlet Thread Size	1/4"-18 NPT	1/4"-18 NPT
Recommended Hose Size, inches	3/8	3/8
Vibration Level, m/s ²	<2.5	<2.5
Sound Level dBa Pressure	84	83
Length, inches (mm)	15.7 (400)	7.3 (185)
Weight, lbs. (kg)	5.5 (2.50)	5 (2.27)
Standard Pad	AT450-46H	AT450-46H
Spanner Wrench (opt.)	AT450-50	AT450-50



- Do not use sanding discs or accessories above maximum rated RPM
- Read safety precautions on pages 594 to 597

Finishing Tools



PT280THUGA

PT280THUGA Crud Thug® Removal Air Tool.

- Quickly remove seam sealers, rust, paint and underbody protectors
- Optional rubber eraser wheel for pinstripe and graphics removal
- Easily removes automotive crud without fumes, heat buildup or surface damage
- Includes 1 fine wire wheel and 1 coarse wire wheel
- Thermally balanced air motor routes air between housing and liner for cooler tool temperatures and longer life
- Planetary gear system for increased torque
- Ergonomic cushion grip insulates against cold and vibration
- Adjustable exhaust outlet in rear of tool allows choice of exhaust direction
- 10 position power/speed regulator allows easy RPM adjustment
- Paddle style trigger for precise speed control

Specifications	PT280THUGA
Rated Power, hp (kW)	0.45 (.33)
Free Speed RPM	3,500
Air Consumption, Free Speed, CFM (SCFM) [L/MIN]	4 (28) [113]
Air Inlet Thread Size	1/4"-18 NPT
Recommended Hose Size, inches	3/8
Vibration Level, m/s ²	2.8
Sound Level dBa Pressure	85
Length, inches (mm)	12 (304)
Weight, lbs. (kg)	2.4 (1.09)



PT280-301MP5



PT280-302MP5



PT280-303MP3



PT280-304



PT280-305



PT280-306



PT280-300-11



PT280-301-11



PT280-302-11



PT280-304-11



PT280-305-11



PT280-306-11

Stock No.	Description	Width, mm	Wheel Diameter, inches	Wire Style	Min. Safe Free Speed RPM	Applications
PT280-301MP5	Wire Wheel (coarse)	23	4.05	Bent, sharpened spring steel tips	4,000	Removes sealers and coatings. Profiles steel surfaces, rough fiberglass, plastic and rubber.
PT280-302MP5	Wire Wheel (fine)	23	4.05	Straight, hardened spring steel tips	4,000	Removes light rust, paint and gasket material. Cleans contours and tight areas.
PT280-303MP3	Rubber Eraser Wheel	30	4.13		3,500	Removes vinyl, decals and pinstripes, along with reflective and DOT tape. Also removes molding and adhesive tape.
PT280-304	Stainless Steel Wire Wheel (fine)	23	4.05	Straight tip stainless steel	4,000	Removes paint, oxidation and liquid gaskets. Cleans weld seams and rivets.
PT280-305	Stainless Steel Wire Wheel (coarse)	23	4.05	Bent tip stainless steel	4,000	Removes paint, corrosion, cleans weld seams, burn and slag. Effective for non-ferrous metals.
PT280-306	Wire Wheel (medium)	23	4.05	Bent, sharpened spring steel tips	4,000	Removes heavy rust, paint, epoxy and marine growth. Profiles aluminum surfaces.
PT280-300-11	Hub	11	4.05		4,000	Use to mount wire wheel to tool.
PT280-301-11	Wire Wheel (coarse)	11	4.05	Bent, sharpened spring steel tips	4,000	Removes sealers and coatings. Profiles steel surfaces, rough fiberglass, plastic and rubber.
PT280-302-11	Wire Wheel (fine)	11	4.05	Straight, hardened spring steel tips	4,000	Removes light rust, paint and gasket material. Cleans contours and tight areas.
PT280-304-11	Stainless Steel Wire Wheel (fine)	11	4.05	Straight, hardened stainless steel tips	4,000	Removes paint, oxidation and liquid gaskets. Cleans weld seams and rivets.
PT280-305-11	Stainless Steel Wire Wheel (coarse)	11	4.05	Bent, sharpened stainless steel tips	4,000	Removes paint, corrosion, cleans weld seams, burn and slag. Effective for non-ferrous metals.
PT280-306-11	Wire Wheel (medium)	11	4.05	Bent, sharpened spring steel tips	4,000	Remove heavy rust, paint, epoxy and marine growth. Profiles aluminum surfaces.

